

RAV4



TOYOTA





OH WHAT A FEELING

You'll feel it with every drive. In every twist and every turn. It's our unwavering commitment to move you, not only today, but well into tomorrow as we relentlessly reimagine the future of mobility.

With our eyes on the horizon, we're committed to creating a future where all of humankind is empowered with the freedom to move.

03	Exterior design	11	Safety	22	RAV4 Edge
04	Design detail	12	Toyota Safety Sense	25	Colours and Trim
05	Interior design	14	RAV4 GX	27	Accessories
07	Performance	16	RAV4 GXL	31	Toyota Advantage
08	Hybrid technology	18	RAV4 XSE		
10	Technology	20	RAV4 Cruiser		

Setting the benchmark, again.



The first RAV4 defined the compact SUV and pioneered a new attitude in everyday possibilities. In the spirit of the original, RAV4 is again making a bold statement in modern performance, capability and design.

RAV4 has been engineered from the ground up and epitomises intuitive modern thinking. From the purposefully chiselled exterior lines, through to the innovative technology, including Toyota's Hybrid powertrain option,

every RAV4 effortlessly blends admirable fuel efficiency with formidable performance.

Today, more than ever, RAV4 promises a world of adventure combined with exceptional on-road characteristics and versatility, to be everything a compact SUV should be.

Forward thinking

Every detail in RAV4 has been thoughtfully designed to present a confident and refined presence on the road.

The exterior design features a wide stance for increased stability and brilliant on-road behaviour. The dynamic lines are accentuated with premium finishes and matched with contemporary touches.

Up front, the sharp design of the long, sleek headlamps is accentuated by integrated clearance and Daytime Running Lamps (DRLs).

The superior handling, stability and comfort that come from the advanced aerodynamics all help minimise driver fatigue over long distances. These design features, including aero stabilising fins and a rear spoiler, also contribute to improved fuel efficiency.

Every RAV4 boasts stylish alloy wheels, rising to 19" alloys on RAV4 Cruiser Petrol and Edge grades, to provide a stylish yet genuinely surefooted connection with the road.

Within the spacious RAV4, soft touch surfaces and outstanding visibility deliver an experience unlike any other.



Elevate your senses



Within RAV4, everything has been designed to elevate your overall driving experience. Each feature has been carefully crafted to deliver maximum versatility and exceptional comfort, with luxurious tactile finishes and materials being used throughout.

RAV4 Cruiser possesses the premium feel of leather accented seats, with heated front passenger seats and driver's seat memory (2-positions). Exceptional legroom provides enough space for everyone to stretch out, and the tilt and slide moonroof on RAV4 Cruiser and Edge grades further enhances the bright spacious atmosphere within. For those in the back seat,

adjustable head rests and rear air vents circulate air to provide an enhanced standard of comfort.

In RAV4, you'll find an expansive boot space coupled with a power back door in XSE, Cruiser and Edge grades. The back door also includes handy hooks to hang items such as a wetsuit, while the reversible boot floor available on variants with a space saver spare wheel, allows you to switch between durable plastic or soft carpet. On the road, the suspension and chassis provide an exceptionally smooth and satisfying ride, ultimately resulting in a whisper-quiet cabin inside.

- A Steering wheel with telephone, audio, voice recognition, Active Cruise Control and Lane Departure Alert controls
- B 60/40 split fold rear seat – Cruiser model shown
- C Reversible boot floor – excludes variants with full size spare wheel
- D Front dual zone climate control – excludes GX Petrol – Cruiser Hybrid model shown
- E Gear lever and cup holders – GXL Petrol 2WD model shown
- F Back door hooks – GXL model shown



The power to amaze



Cruiser Hybrid AWD shown accessorised with tow bar, tow ball and trailer wiring harness.² All accessories sold separately.

Every element of RAV4 has been engineered to attain new levels of driving excellence and exhilaration. RAV4 gives you the choice of three highly refined engines.

The 2.0L 2WD petrol engine available on GX, GXL and Cruiser grades offers highly responsive performance, enhanced fuel efficiency and comes with Continuously Variable Transmission (Auto CVT) for incredibly smooth acceleration and responsive driving.

The 2.5L hybrid system comes in 2WD (except Edge) and AWD options and is available on all RAV4 grades. It offers the best of both

petrol and hybrid-electric power, delivering an impressive 163kW of combined power on hybrid AWD models and fuel consumption as low as 4.7L/100km¹ on hybrid 2WD models. It also automatically recharges as you drive, so never needs to be plugged in, and is paired with the smooth response of an Auto CVT.

Both the 2.5L hybrid AWD and 2.5L petrol AWD engine available on Edge combine genuine strength with fuel efficiency for an enhanced driving experience. With power transferred through either Auto CVT or an advanced 8-speed automatic transmission, it delivers the next generation in response and feel.

Plus, the Dynamic Torque Vectoring AWD system on Edge petrol models independently controls the torque distribution between the left and right rear wheels to provide excellent traction and positive drive-line control on all road surfaces.

When it comes to pulling its weight, the 2.5L hybrid AWD or 2.5L petrol AWD engines shoulder an impressive 1.5 tonne braked towing capacity.²

An aerial photograph showing a winding asphalt road that curves through a dense forest. The road is dark and contrasts with the vibrant green and yellow foliage. To the left of the road, there is a rocky, brownish terrain with visible geological patterns. The overall scene is captured from a high angle, looking down on the landscape.

Hybrid technology, that's future forward.

The RAV4 2.5L hybrid system delivers unparalleled low fuel consumption and performance with the ability to travel up to 1145km¹ uninterrupted, without ever needing to be plugged in.

With RAV4 Hybrid, even greater fuel efficiency now means no compromise on serious power.

Toyota has led the way in Hybrid technology for over 20 years. And as we continue to drive the future of mobility, it's easy to see why millions of drivers worldwide have made the switch.

The Hybrid System



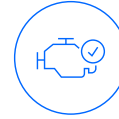
Four Key Benefits

Toyota Hybrid's latest technology gets you moving powerfully and smoothly every time. Enjoy an uncompromising drive with responsive, dynamic performance.



Quiet

The quieter and calmer experience in a Toyota Hybrid delivers one of the most satisfying and enjoyable drives on the road, with no compromise on vehicle responsiveness. It's why millions of hybrid drivers choose never to go back to petrol-only engines once they've made the switch.



Reliable

Toyota's Hybrid System offers the reliability and quality you can always expect from Toyota. Tested and trusted for over 20 years – so no matter where you go, you'll have peace of mind in every drive.



Powerful

Experience an uncompromising drive in a Toyota Hybrid with responsive, dynamic performance. You get impressive off-the-line torque that gets you moving powerfully and smoothly every time.

Starting off

The electric motor is used primarily and power stored in the battery is used to turn the motor.

Full acceleration

Power is provided by the petrol engine in addition to the electric motor. Output is maximised for acceleration.

Braking and deceleration

The electric motor functions as a generator to recharge the battery by itself. No fuel is used, so there are minimal CO₂ emissions.

Normal driving

A mix of petrol and electric is used for best economy, depending on the conditions. The battery is recharged where possible.

At rest

With the car brought to a stop, the petrol engine cuts off. The system automatically avoids idling to conserve fuel and reduce CO₂ emissions.



Switched-on living

The advanced technology in RAV4 helps transform every journey into an effortless driving experience.

The 4.2" Multi Information Display (MID) on RAV4 GX and the GXL, rising to 7" on RAV4 XSE, Cruiser and Edge, delivers important trip and performance information including odometer, outside temperature and driver assist functions. On XSE, Cruiser and Edge grades, you can also choose between an analogue or digital speedometer.

The 8" colour touchscreen display includes USB port,⁴ digital radio and Bluetooth^{®5} connectivity. Your experience is further enhanced with Apple CarPlay^{®6, 8} and Android Auto,^{™7, 8} (speak to your Dealer about device compatibility) for compatible smart phones, allowing you to safely use voice commands, touchscreen or dials to play music, navigate via maps, or use a wide range of your favourite apps and much more.

On RAV4 Cruiser and Edge, a premium JBL^{®9} 9-speaker system delivers an even richer, clearer audio performance. The wireless phone charger¹² on GXL grades and higher provides added convenience. A 12V DC accessory socket is located in the centre console of every RAV4, with an extra two fast-charging USB⁴ ports in the armrest storage and further two USB⁴ ports for rear passengers.



A 7" Multi Information Display – XSE, Cruiser and Edge only. Cruiser Hybrid shown.
Image indicative only.

B Wireless phone charger¹² – GXL, XSE, Cruiser and Edge only.
Previous overseas Cruiser Hybrid model shown

C Armrest storage with USB⁴ ports

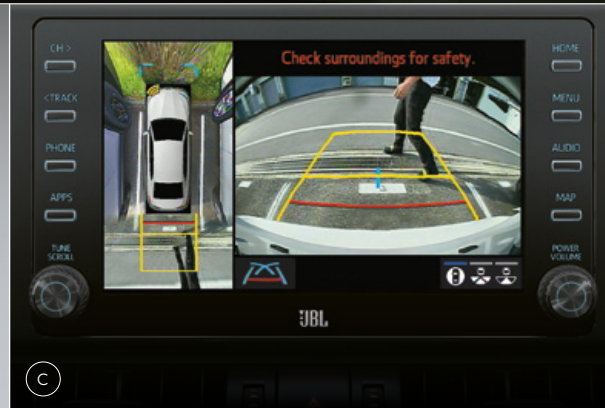
D Rear seat air vents and USB⁴ ports

A higher standard of safety

Every RAV4 features Toyota Safety Sense technology to help protect all those travelling within.

Toyota Safety Sense (TSS) is standard across the range and seven SRS airbags provide all round protection and peace of mind. A reversing camera¹⁰ is fitted on all models and features Back Guide Monitor from GXL as well as a Panoramic View Monitor on Cruiser and Edge. When reversing out of a blind car space, Rear Cross Traffic Alert¹⁰ (RCTA) can help warn you of vehicles approaching from either side and crossing behind you.

If you're driving on a multi-lane road, Blind Spot Monitor¹⁰ (BSM) can help detect vehicles driving in, or rapidly approaching the blind spots and can alert the driver with an indicator in the wing mirrors.



A 7 SRS airbags – overseas Cruiser model shown

B Blind Spot Monitor¹⁰

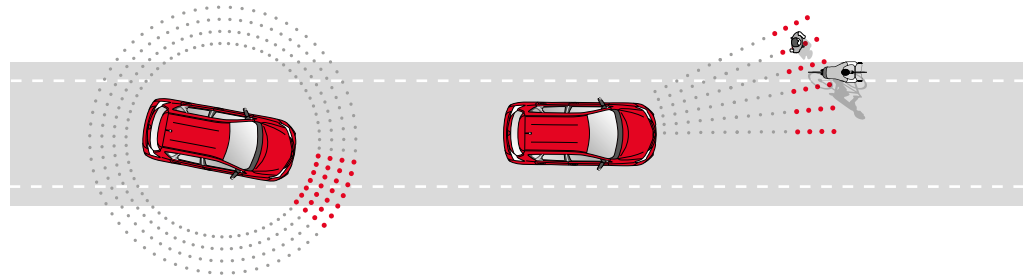
C Panoramic View Monitor – Cruiser and Edge only.
Cruiser model shown. Image indicative only.

Toyota Safety Sense



At Toyota, we believe it's simply not enough to say "safety comes first" – we prove it. That's why, in our ongoing pursuit of creating ever safer cars, now and into the future, we developed Toyota Safety Sense¹⁰ (TSS). A suite of active safety features designed to help support safe driving and help protect you and your passengers.

RAV4 features TSS driver assistance technologies, aiming to recognise and help avoid certain hazards and collisions, giving you and your passengers greater peace of mind wherever you're headed. Please visit toyota.com.au for vehicle and specification information.



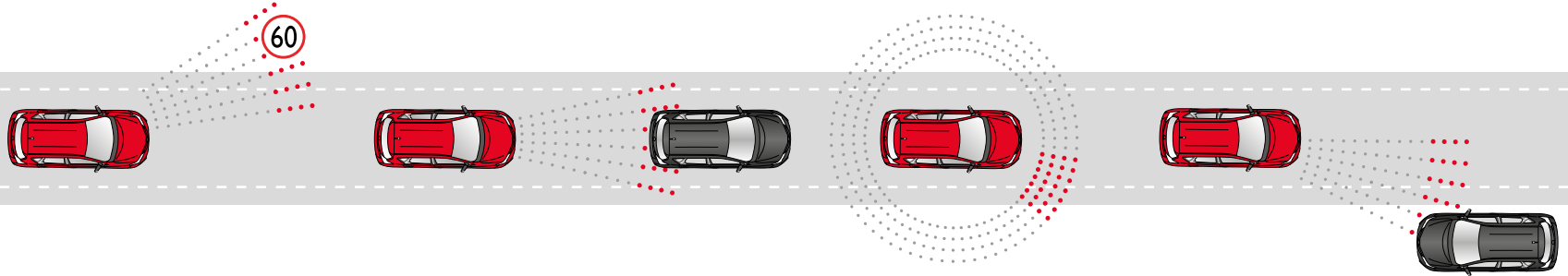
Lane Trace Assist

When driving on highways and freeways, Lane Trace Assist¹⁰ uses a camera to detect lane markings. It is designed to alert you and provide steering assistance to help avoid drifting and keep you centred in your lane.

Pre-Collision Safety system with pedestrian and daytime cyclist detection

Pre-Collision Safety (PCS) system¹⁰ with pedestrian and daytime cyclist detection is a multi-stage warning system. Using an integrated camera and radar to help detect other vehicles in front of you, the PCS is designed to assist the driver where there is a likelihood of frontal collision with cars and pedestrians during day or night, or cyclists during the daytime. PCS includes a visible and audible alert of possible collisions, additional braking force to assist when you're braking, and if a collision appears to be unavoidable, automatic braking to help mitigate impact.





Road Sign Assist (speed signs only)

Road Sign Assist¹⁰ was developed to help recognise road speed signs and provide information to you. It displays the most recently recognised speed limit on the Multi Information Display.

Active Cruise Control (all speed)

Active Cruise Control¹⁰ is designed to help keep a constant distance between vehicles. It uses a millimetre wave radar to monitor the gap between your vehicle and the one in front, automatically accelerating or slowing down when needed to help you maintain a set distance.

Lane Departure Alert with steering assist

Lane Departure Alert¹⁰ with steering assist is designed to help prevent vehicles drifting from their lane, by monitoring road markings, and providing a visible and audible alert should it detect any deviation from the lane. It may also apply additional steering force if needed, to help you stay in your lane.

Automatic High Beam

Using a camera to sense either approaching headlights or the tail lights ahead, Automatic High Beam¹⁰ is designed to help you maintain safe and considerate driving by switching between high and low beam as needed.

GX



GX Petrol 2WD model shown

- 2.0L petrol engine (2WD) or 2.5L hybrid system (2WD or AWD)
- Auto CVT
- 17" alloy wheels
- Parabolic LED headlamps with auto-levelling – petrol only
- LED Daytime Running Lamps (DRLs)
- LED rear combination lamps
- Front LED fog lamps
- Power adjustable side mirrors with heaters
- Electronic Park Brake with brake hold
- Electrically retractable side mirrors
- 6 speakers
- 8" colour touchscreen display with Apple CarPlay^{®6,8} and Android Auto^{™,7,8}

- USB ports⁴ – x3 front, x2 rear
- 4.2" Multi Information Display (MID)
- Digital radio
- Steering wheel controls with audio, MID, voice recognition and telephone controls
- Blind Spot Monitor
- Rear Cross Traffic Alert
- Reversing camera with fixed guidelines
- Bluetooth^{®5} connectivity
- Front and rear parking sensors
- Hill-start Assist Control
- Automatic headlamps – light sensitive
- Rain sensing wipers
- Toyota Safety Sense – including Lane Departure Alert, Lane Trace Assist, Pre-

Collision Safety system with pedestrian and daytime cyclist detection, Road Sign Assist (speed signs only), Automatic High Beam and Active Cruise Control (all speed)

- Remote entry with smart start system
- Premium steering wheel
- Carpet floor mats – front and rear

Exclusive to Hybrid

- Front dual zone climate control
- Projector LED headlamps
- Satellite navigation – optional



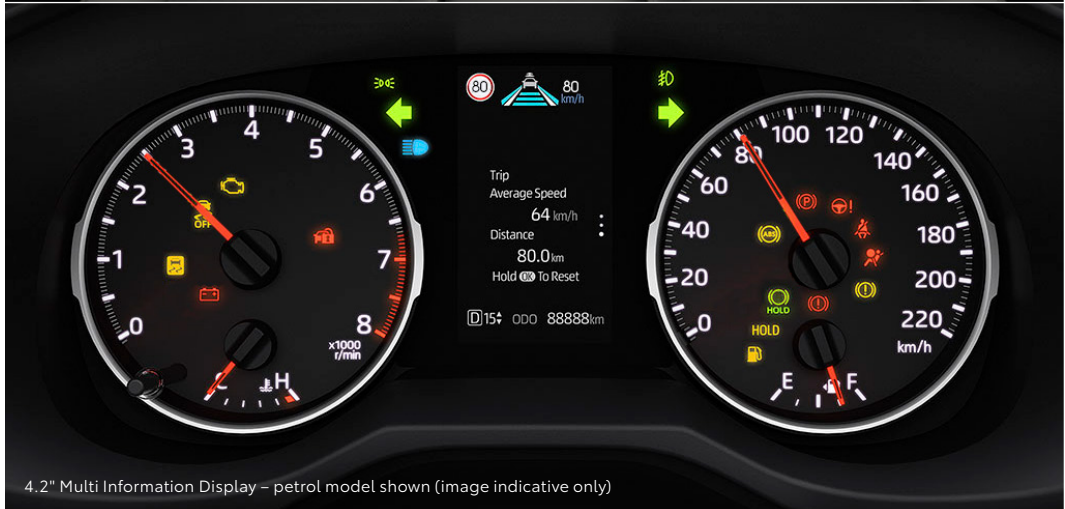
GX AWD Hybrid with optional satellite navigation shown



Apple CarPlay®^{6,8,11} – GX AWD Hybrid shown



Dual zone climate control – GX AWD Hybrid only



4.2" Multi Information Display – petrol model shown (image indicative only)



17" alloy wheels

GXL



GXL Petrol 2WD model shown

In addition to, or in replacement of, GX features:

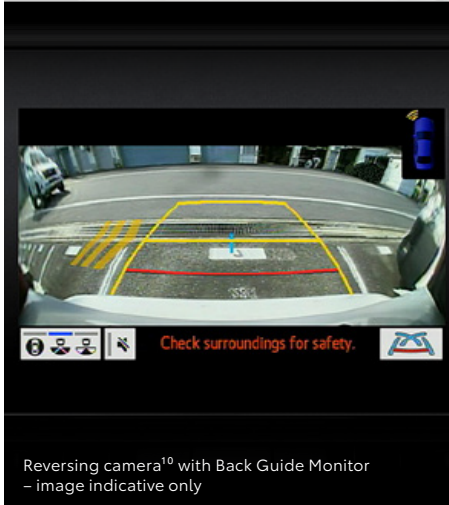
- 2.0L petrol engine (2WD) or 2.5L hybrid system (2WD or AWD)
- 18" alloy wheels
- Rear privacy glass
- Roof rails
- Premium embossed fabric seats
- Wireless phone charger¹²
- Smart entry
- Reversing camera with Back Guide Monitor
- Electrochromatic interior mirror
- Premium bumper and grille
- Front mudguards
- Illuminated interior door switches



GXL Hybrid AWD interior shown



Smart entry and start system – petrol model shown



Reversing camera¹⁰ with Back Guide Monitor
– image indicative only



Wireless phone charger¹² – overseas model shown.
GXL excludes ambient lighting



18" alloy wheels

XSE



XSE Hybrid AWD model shown

In addition to, or in replacement of, GXL features:

- 2.5L hybrid system (2WD or AWD)
- Driver and front passenger heated seats
- 10-way power adjustable driver seat
- Leather accented door trim
- SofTex⁶ seats with blue stitching
- Unique ambient lighting
- 7" colour Multi Information Display
- Power back door
- 18" alloy wheels
- Unique Black XSE design door moldings, exterior mirrors, fog lamp detailing, front and rear bumper, grille, overfenders and two-tone roof



XSE Hybrid AWD interior shown



SofTex® seats with blue stitching



7" Multi Information Display



18" alloy wheels

Cruiser



Cruiser Petrol 2WD model shown

In addition to, or in replacement of, GXL features:

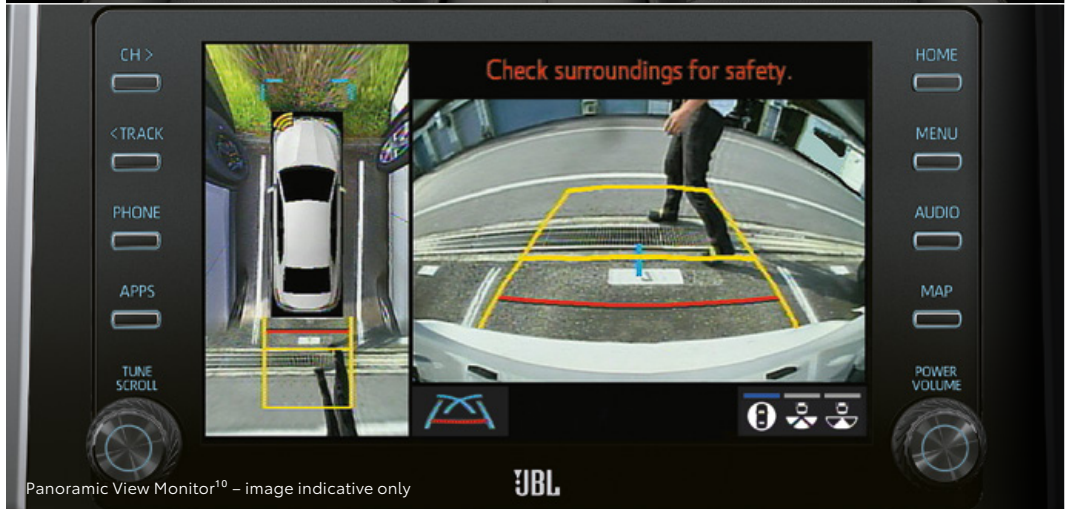
- 2.0L petrol engine (2WD) or 2.5L hybrid system (2WD or AWD)
- 19" alloy wheels – petrol only
- 18" gloss black alloy wheels – hybrid only
- Tilt and slide moonroof
- Power back door
- Leather accented interior
- 10-way power adjustable driver's seat with power lumbar support adjustment
- 8-way power adjustable front passenger seat
- Driver's seat memory – 2 positions
- Driver and front passenger heated and ventilated seats – 3 settings
- Chrome trimmed exterior door handles
- 7" Multi Information Display
- 9-speaker JBL®⁹ premium audio
- Panoramic View Monitor¹⁰
- Ambient interior cabin lighting
- Automatic electronically retractable door mirrors
- Digital rear-view mirror



Cruiser Hybrid AWD interior shown



Tilt and slide moonroof



Panoramic View Monitor¹⁰ – image indicative only



19" alloy wheels – petrol only

Broaden your horizons

RAV4 Edge



Edge Petrol model shown with optional tilt and slide panoramic moonroof

More than just purposeful eye-catching design, the robust RAV4 Edge has also been engineered to perform whether you're in town or out. While the unique styling makes its mark with the bumper, wheel arch moulding, grille and fog lamp surrounds exclusive to this grade.

The 19" matte finish alloy wheels are also unique to Edge and provide outstanding grip for an assured and incredibly smooth ride.

And now with a choice of either a traditional petrol engine or Toyota's latest generation hybrid technology, RAV4 Edge has all the power and capability you need.

Inside, the hard-wearing SofTex^{®9} seats combine comfort with class, while up above, the optional tilt and slide panoramic moonroof available for the Edge Petrol opens another frontier of driving pleasure and interior light.

Live life the way you choose, live it to the Edge.

Edge



Edge Hybrid shown

In addition to, or in replacement of, GXL features:

- 2.5L hybrid system (AWD) or 2.5L petrol engine (AWD)
- 8-speed automatic transmission – petrol only
- 19" alloy wheels
- Tilt and slide moonroof
- Power back door
- 10-way power adjustable driver's seat with power lumbar support adjustment
- SofTex^{®9} seats
- Driver and front passenger heated and ventilated seats – 3 settings
- Unique Edge design bumper, wheel arch moulding, grille and fog lamp surrounds
- 7" Multi Information Display
- 9 speaker JBL^{®9} premium audio
- Panoramic View Monitor
- Ambient interior cabin lighting
- Rear Torque Vectoring Differential – petrol only
- Multi-Terrain Select – petrol only
- Downhill Assist Control – petrol only
- Digital rear-view mirror

Option

- Tilt and slide panoramic moonroof – petrol only



Edge Hybrid AWD interior shown



Optional tilt and slide panoramic moonroof – Edge Petrol only



Front dual zone climate control – Edge Hybrid AWD model shown



Multi-Terrain Select – Edge Petrol shown



Unique Edge design bumper, grille and fog lamp surrounds

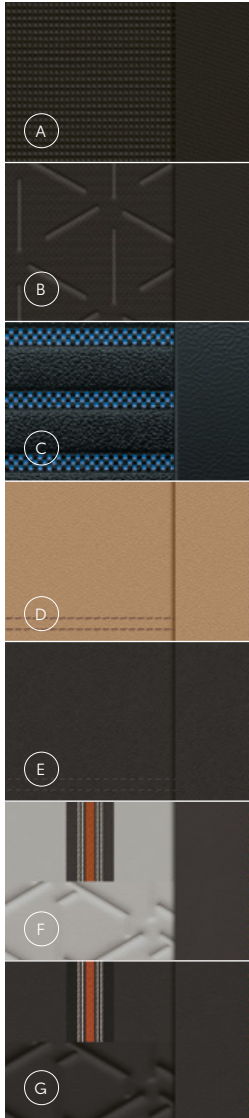


19" alloy wheels

Shades of brilliance

We have put together a range of colour options¹³ for each RAV4 model, all specially chosen to allow you to match your RAV4 to your individual expression and taste. So how will you choose to colour your statement in driving style?

Whichever RAV4 you choose, the interior expresses exceptional comfort, style and quality. From luxurious fabrics through to leather accents and embossed finishes, every RAV4 trim option combines a premium feel, meticulous attention to detail and outstanding looks.



COLOUR AND TRIM GUIDE		Glacier White	Crystal Pearl ¹⁴	Silver Sky ¹⁴	Graphite ¹⁴	Eclipse Black ¹⁴	Atomic Rush ¹⁴	Mineral Blue ¹⁴	Saturn Blue ¹⁴	Jungle Khaki	Crystal Pearl with black roof ¹¹	Silver Sky with black roof ¹¹	Graphite with black roof ¹¹	Mineral Blue with black roof ¹¹
Grade	Interior Seat Trim													
GX	Black fabric sewn pattern (FB20)	•		•	•	•	•	•	•					
GXL	Black fabric embossed pattern (FA20)	•	•	•	•	•	•	•	•					
XSE	Black SofTex ^{®9} with blue accents (EC20)										•	•	•	•
Cruiser	Nutmeg leather accented (LA40)	•	•	•	•	•	•	•	•					
	Black leather accented (LA20)	•	•	•	•	•	•	•	•					
Edge	Orchid Brown and Light Grey SofTex ^{®9} with orange accents (EB41)				•	•	•	•		•				
	Black SofTex ^{®9} with orange accents (EB20)				•	•	•	•		•				

- A Black fabric sewn pattern FB20
- B Black fabric embossed pattern FA20
- C Black SofTex^{®9} with blue accents EC20
- D Nutmeg leather accented LA40
- E Black leather accented LA20
- F Orchid Brown and Light Grey SofTex^{®9} with orange accents EB41
- G Black SofTex^{®9} with orange accents EB20



Silver Sky¹⁴ 1D6 / XSE with black roof 2QY



Crystal Pearl¹⁴ 070 / XSE with black roof 2QJ



Glacier White 040



Graphite¹⁴ 1G3 / XSE with black roof 2QZ



Mineral Blue¹⁴ 8W2 / XSE with black roof 2VV



Atomic Rush¹⁴ 3T3



Eclipse Black¹⁴ 218



Saturn Blue¹⁴ 8X8



Jungle Khaki 6X3

Your RAV4, tailored to your lifestyle.

More than an exciting partner to get you out and enjoying life, RAV4 makes a clear statement about your lifestyle choices and purpose.

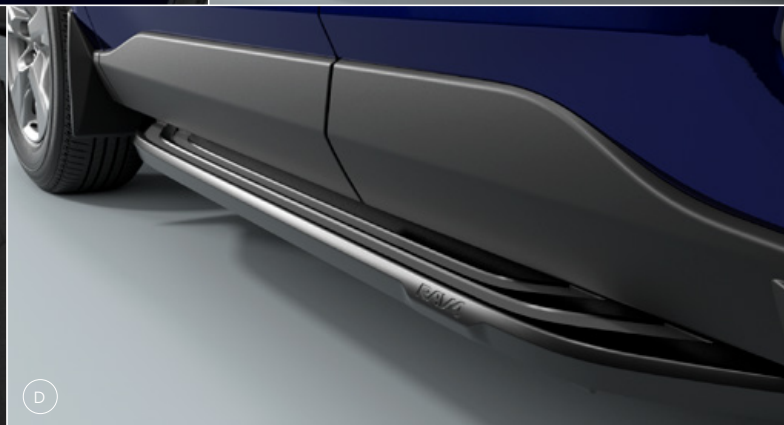
By choosing from our range of Toyota Genuine Accessories,¹⁵ you can refine RAV4 to reflect your personal style and further enhance your work life balance.

All RAV4 Toyota Genuine Accessories are ready to integrate seamlessly with its unique design while also accentuating the unmistakable RAV4 on-road presence.

Challenge the everyday, accessorise your RAV4 exactly the way you choose.



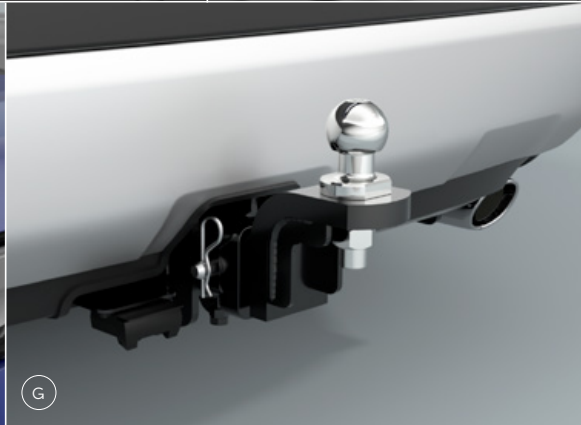
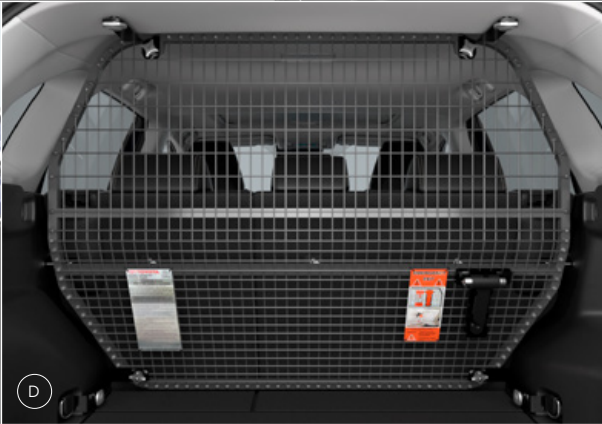
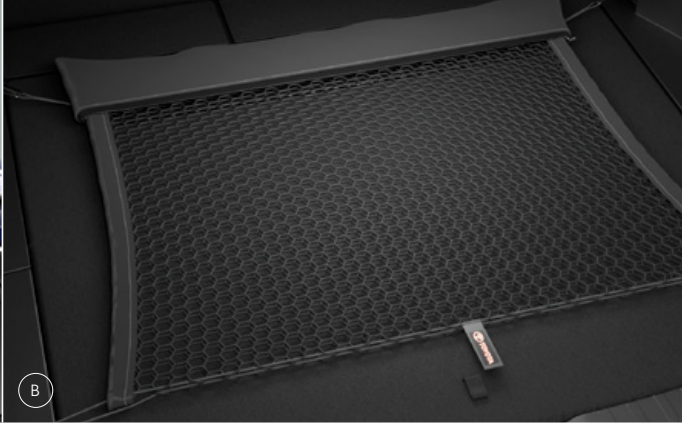
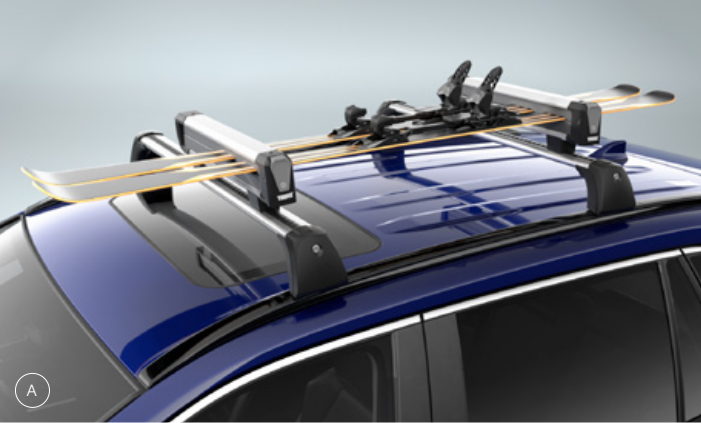
Cruiser Hybrid AWD model shown accessorised with roof racks, bonnet protector – clear, headlamp covers, nudge bar – black, side steps, slimline weathershields and 18" alloy wheels. All accessories sold separately. Wash the exterior and underside of the vehicle with fresh water immediately after driving through seawater to prevent damage.



- A Slimline weathershields
- B Nudge bar – black shown, also available in alloy
- C Seat covers
- D Side steps
- E Mudguards – GX models only
- F Headlamp protectors
- G Dash camera



Edge Petrol model shown accessorised with roof racks, bicycle carrier, 19" alloy wheels, bonnet protector - tinted, side steps and dash camera. All accessories sold separately.



- A Ski carrier – roof rack sold separately.
Not applicable on GX models
- B Cargo net
- C Roof racks
- D Cargo barrier
- E All-weather cargo mat
- F Bonnet protector – tinted shown,
also available in clear
- G Tow bar, tow ball and trailer wiring
harness² – sold separately

The Toyota Advantage



When you join the Toyota family, you get so much more than a new car feeling. You get a lifetime of benefits keeping you moving now and well into the future.

Discover your Toyota lifetime of advantages at toyota.com.au



Discover the freedom of Toyota Access¹⁶

Toyota Access puts you in control when buying a new car, with lower monthly repayments.¹⁷ Drive out of the Dealership with a clear road ahead then drive back a few years later with more options at your disposal than ever before. Whatever stage you're at in life, Toyota Access puts you in the driver's seat with flexibility and assurance. To discover Toyota Access for yourself, visit toyota.com.au/toyota-access

Capped price servicing¹⁸

A new Toyota means you don't have to worry about unexpected service costs. Every Toyota comes with a low, capped price service cost for a set number of years/kilometres. Pay the same low capped price from one eligible logbook service to the next for up to 5 years or 75,000km, whichever occurs first (including Toyota Genuine parts, labour and fluids). For the full benefits, consult a Toyota Dealer or visit toyota.com.au/advantage

Toyota Warranty Advantage

Every new Toyota is built to exceptional standards, and from 1 January 2019, Toyota vehicles are backed by a five year/unlimited kilometre warranty.¹⁹ If your vehicle is properly serviced and maintained per its Warranty and Service Book, we'll extend your engine and driveline warranty for an additional 2 years,²⁰ giving you peace of mind for years to come. In the event of a claim covered by warranty, you are covered by a 60-day money back guarantee and 7 years emergency assistance including expenses related to car hire or towing if required. For more information, visit toyota.com.au/owners/warranty

Your battery goes further²¹

The hybrid battery used by Toyota, requires no maintenance, charges automatically while you drive and never needs to be plugged into a power supply. From 1 January 2019, Toyota Hybrid batteries are backed by a 5-year/unlimited kilometre warranty. Complete an annual hybrid battery health check according to Toyota specifications during routine maintenance, and we'll extend your hybrid battery warranty to 10 years.

Finance to get you going

If you need a little help, Toyota Finance²² can offer you a wide range of vehicle financing options. With Toyota Finance, you'll have the peace of mind of dealing with one of Australia's leading vehicle finance corporations with over 30 years experience. And with a range of flexible products and services to suit almost every need and circumstance, Toyota Finance can help find the right package for you or your business.

Insurance options

Our Comprehensive Motor Vehicle insurance policy is packed with great benefits including; agreed value cover, new vehicle replacement if your Toyota is written off within the first 3 years, use of Toyota Genuine Parts, and a Lifetime Repair Guarantee on repairs authorised by Toyota Insurance.²³ For more information, visit toyota.com.au/insurance

Extend your peace of mind

Whether it's a flat tyre, lost keys or a flat battery, Toyota Roadside Assist²⁴ is never more than a phone call away. 24 hours a day, 7 days a week, our technicians are there to help you get back on the road. For more information, visit toyota.com.au/insurance/roadside-assistance

Disclaimers and Notice

- 1 Achieved in test conditions for comparison purposes only. Actual fuel consumption varies depending on driving conditions/style, vehicle condition, load and options/accessories fitted. Source: ADR81/02 combined (L/100km).
- 2 Towing capacity subject to regulatory requirements, tow bar and vehicle design and towing equipment limitations. Ask your Dealer for Toyota Genuine tow bar capacity and availability device.
- 3 Coverage varies based on vehicle location. Service varies based on vehicle location. See sunattraffic.com.au
- 4 Compatibility and functionality varies depending on device.
- 5 Bluetooth® is a registered trademark of Bluetooth SIG, Inc.
- 6 CarPlay® is a trademark of Apple, Inc. registered in the U.S. and other countries.
- 7 Android Auto™ is a trademark of Google LLC.
- 8 Requires compatible device, USB connection, mobile data, network reception and GPS signal. Mobile usage at user's cost. Apps subject to change. For details see toyota.com.au/connected
- 9 Product and company names are trademarks of their respective owners.
- 10 Driver assist feature. Only operates under certain conditions. Check your Owner's Manual for explanation of limitations. Please drive safely.
- 11 All images indicative only.
- 12 Only Qi-supported devices compatible. Refer to device manufacturer. May require additional purchase of accessory to support wireless charging.
- 13 Toyota Australia reserves the right to vary or discontinue the current interior and exterior colours, trims and colour/trim/model combinations. Colours and trims displayed are a guide only and may vary from actual colours due to printing/display process. See your Toyota Dealer to confirm availability when ordering your vehicle.
- 14 Paint featured is an optional extra at additional cost.
- 15 Toyota Genuine Accessories are not applicable to all models/grades. See your Toyota Dealer to confirm Accessories suitable for your vehicle. Toyota Australia uses its best endeavours to ensure material is accurate at the time of publishing. All information must be confirmed with your Toyota Dealer at the time of ordering, as specifications, applicability and availability may change over time. Colours displayed are a guide only and may vary from actual colours due to the printing/display process. Toyota Australia reserves the right to change and/or discontinue, without notice, prices, colours, materials, equipment and specifications. To the extent permitted by law, Toyota Australia will not be liable for any damage or loss incurred from relying on the information and images contained in this material. Consider the mass of your load and your selected accessories to ensure your vehicle will not exceed gross vehicle mass limits. Certain accessories when fitted may require removal of standard equipment, which may be retained by Toyota. Visit toyota.com.au/vehiclepayload
- 16 Terms and conditions, fees and charges apply. Toyota Access Guaranteed Future Value products are available to approved customers of Toyota Finance, a division of Toyota Finance Australia Limited ABN 48 002 435 181, AFSL and Australian Credit Licence 392536.
- 17 Lower monthly repayments compared to a similar term with no Guaranteed Future Value (GFV) or equivalent balloon final payment. Total interest charges will be higher if a GFV or balloon final payment is selected.
- 18 Applies to standard scheduled logbook servicing (normal operating conditions). Excludes Government and Rental vehicles. For details see your Toyota Dealer or visit toyota.com.au/advantage
- 19 The standard Toyota Warranty Advantage period is 5 years, with unlimited kms, from delivery. Excludes vehicles used for a commercial purpose, such as taxis, hire vehicles and vehicles transporting people or goods for payment including rideshare. The commercial vehicle Toyota Warranty Advantage period is 5 years from delivery or 160,000kms (whichever occurs first). See toyota.com.au/owners/warranty or your vehicle's Warranty and Service Book for T&Cs. This warranty does not limit and may not necessarily exceed your rights under the Australian Consumer Law.
- 20 The Toyota Warranty Advantage Extended Engine and Driveline coverage is for 7 years from delivery, provided your vehicle is properly serviced and maintained per its Warranty and Service Book. Excludes vehicles used for a commercial purpose, such as taxis, hire vehicles and vehicles transporting people or goods for payment including rideshare. See toyota.com.au/owners/warranty for details. This warranty does not limit and may not necessarily exceed your rights under the Australian Consumer Law.
- 21 The Toyota Warranty Advantage (TWA) Hybrid Battery coverage is for up to 10yrs, with unlimited kms, from date of first delivery. It is comprised of the standard 5yr TWA and extended each year for an additional 5yrs with an annual hybrid health check inspection according to Toyota specifications. Excludes vehicles used for a commercial purpose, such as taxis, hire vehicles and vehicles transporting people or goods for payment including rideshare. See toyota.com.au/owners/warranty.
- 22 Approved applicants only. Terms and conditions apply. Toyota Finance is a division of Toyota Finance Australia Limited ABN 48 002 435 181, AFSL and Australian Credit Licence 392536.
- 23 Terms and conditions apply. This advice is general in nature and does not take into account your objectives, financial situation or needs. Before making a decision to purchase any of the insurance products you should consider the appropriateness of the advice taking into account your own objectives, financial situation and needs and refer to the current PDS for the relevant product available from participating Dealers, via our website at toyota.com.au/insurance or by calling 137 200. Toyota Insurance purchased in a Dealership or via the Toyota Insurance National Customer Solutions Centre is issued by Toyota Finance Australia Limited ABN 48 002 435 181, AFSL and Australian Credit Licence 392536. The insurer is Aioi Nissay Dowa Insurance Company Australia Pty Ltd ABN 11 132 524 282, AFSL 443540 (Adica). If Toyota Insurance is purchased online, the issuer and insurer is Adica.
- 24 Toyota Roadside Assist is administered by Toyota Finance, a division of Toyota Finance Australia Limited ABN 48 002 435 181, AFSL and Australian Credit Licence 392536.

IMPORTANT NOTICE – PLEASE READ:

Toyota Australia uses its best endeavours to ensure material is correct when published. Check with your authorised Toyota Dealer when ordering to ensure the vehicle with your chosen specifications, equipment and colour is available and can be delivered within the timeframe suitable to you. When ordering accessories, check with your authorised Toyota Dealer to ensure the accessory's design, features and colours are available and fit your vehicle. Ensure the mass of your load does not exceed the maximum allowable individual axle capacity, Gross Vehicle Mass and/or Gross Combined Mass of the vehicle. Refer to toyota.com.au for further details. Colours displayed are a guide only and may vary from actual colours due to printing/display processes. Certain accessories when fitted will require the removal of standard equipment, which may be retained by Toyota Australia or your

Toyota Dealer. Toyota Australia reserves the right to change, without notice, prices, colours, materials, equipment, specifications and discontinue colours/models. To the extent permitted by law, Toyota Australia will not be liable for any damage, loss or expense incurred as a result of reliance on this material in any way. Distributed nationally (other than in Western Australia) by Toyota Motor Corporation Australia Limited ABN 64 009 686 097, 155 Bertie St, Port Melbourne 3207. Material distributed in Western Australia by or on behalf of Prestige Motors Pty Ltd (for vehicles) and by Eastpoint Pty Ltd (for parts/accessories). Toyota Australia makes no warranties regarding (and will not be liable for) accuracy of materials distributed in Western Australia. PROOF HQ: T2022-018220. GTO-005451. VERSION: MAY 2022.