



NISSAN

NISSAN PATROL SPECIFICATIONS

Specifications

	Ti	Ti-L
Engine		
VK56VD 5.6 Litre VVEL V8 petrol engine	•	•
Direct Injection Gasoline (DIG)	•	•
Displacement (cc)	5552	
Bore x stroke (mm)	98 x 92	
Compression ratio	11.2:1	
Max power (kW@rpm)	298@5800	
Max torque (Nm@rpm)	560@4000	

Transmission

7 Speed automatic transmission with Manual Mode & Adaptive Shift Control (ASC)	•	•
Transfer case - Intelligent 4x4 with electronic 4WD selection	•	•
Ratio 1st	4.887	
Ratio 2nd	3.170	
Ratio 3rd	2.027	
Ratio 4th	1.412	
Ratio 5th	1.000	
Ratio 6th	0.864	
Ratio 7th	0.775	
Ratio Reverse	4.041	
Final Drive	3.357	
Transfer Ratio - Low	2.679:1	
Transfer Ratio - High	1:1	

Dimensions

Overall length (mm)	5175	
Overall width (excluding mirrors) (mm)	1995	
Overall height (mm)	1940	1955
Wheelbase (mm)	3075	
Track front/rear (mm)	1695/1695	
Min. turning circle (kerb to kerb) (m)	12.5	
Kerb mass (kg) [†]	2812	2861
Gross Vehicle Mass (kg) [#]	3500	
Carrying capacity (kg) [~]	688	639
Ground clearance (mm)	273	
Approach angle (degrees)	34.4	28.0
Departure angle (degrees)	26.3	

Related Towing Capacity[^]

Trailer with brakes (kg)	3500	
Trailer without brakes (kg)	750	
Maximum towball download (kg)	350	
Gross front axle capacity (kg)	1650	
Gross rear axle capacity (kg)	2030	
Gross combined mass (kg)	7000	

	Ti	Ti-L
Fuel		
Fuel type - Premium Unleaded Petrol (95 RON or higher)	•	•
Fuel tank capacity (litres)	140	
Fuel consumption l/100km (ADR 81/02 combined) [^]	14.4	

Mechanical

Hydraulic Body Motion Control suspension (front and rear) (HBMC)	•	•
Independent double wishbone coil sprung front and rear suspension	•	•
Front and rear ventilated disc brakes	•	•
Rear Helical Limited Slip Differential (LSD)	•	•
Vehicle speed sensitive power steering	•	•

Wheels / Tyres / Capability

18 x 8J alloy wheels	•	•
265/70R18 tyres	•	•
Full size alloy spare wheel	•	•
Electronic rear differential lock	•	•
Hill Descent Control (HDC) with on/off switch and Hill Start Assist (HSA)	•	•
Off Road Monitor	•	•

Comfort & Convenience

Intelligent Key™ with remote keyless entry	•	•
Push button engine start	•	•
Manual tilt and telescopic adjustable steering column	•	
Tilt and telescopic electronically adjustable steering column		•
8-way driver seat with power slide/recline/height adjustment and power lumbar support	•	•
8-way front passenger seat with power slide/recline/height adjustment	•	•
Driver's seat memory, with two settings, including side mirrors and steering column		•
60/40 split-fold second row seating with manual recline and fold function and centre armrest	•	•
60/40 split-fold third row seating with manual recline and fold function	•	•
Tri-zone climate control air-conditioning	•	
Tri-zone climate control air-conditioning with Intelligent Key memory		•
Heated / Cooled front seats		•
Second row air conditioning controls	•	•
Cruise control	•	•

MY20 PATROL SPECIFICATIONS

Specifications

	Ti	Ti-L
First row and second row auto up/down power windows	•	•
12V power outlets (front, centre console, second row and rear luggage area)	4	4
Heated door mirrors with power adjustment/ auto folding & integrated indicator lights	•	•

Infotainment & Connectivity

Satellite Navigation with 3D mapping and 8" integrated colour display with touch screen	•	•
Traffic Monitoring System (TMS)	•	•
Audio system with CD/DVD, AM/FM radio, MP3 and USB /iPod* connectivity with Bluetooth® audio streaming	•	•
Two second row seat 8" entertainment screens with headphones and remote control (USB/DVD/HDMI)		•
Bluetooth® handsfree phone system with steering wheel controls	•	•
Steering wheel audio controls	•	•
USB charging ports (behind centre console)	2	2
6 Speakers	•	
13 Premium Bose® speakers		•

Interior

Seating capacity	8	7
Front adjustable active headrests	•	•
Rear adjustable headrests	•	•
Leather accented [†] seat trim	•	•
Leather accented [†] steering wheel and shift lever	•	•
Leather accented [†] door trim	•	•
Foot release park brake	•	•
Chrome interior door handles	•	•
First row centre console cool box		•
First and second row door pockets	•	•
Driver and front passenger back pocket	•	•
Front and rear opening centre console storage with armrest	•	•
Glove compartment with lock and light	•	•
Cup holders	4	4
Bottle holders	8	8
Sunglasses holder	•	•
Driver and passenger assist grips (first, second and third row)	•	•
Door operated interior lights	•	•
Rear luggage area light	•	•
Front map lights	•	•
Second row passenger reading lights	•	•
First and second row door armrest	•	•
Driver and passenger sunvisors with extension and illuminated vanity mirrors	•	•
Second row coat hanger hooks	2	2
Cargo net hooks	•	•
Floor mats	•	•

	Ti	Ti-L
Instrumentation		
Intelligent 4WD shift switch (Auto, 4H & 4L) with mode select (On Road, Sand, Snow, Rock)	•	•
Drive Computer	•	•
Tachometer and twin trip odometer	•	•
Digital clock	•	•
Low fuel level warning indicator	•	•
Door ajar warning indicator	•	•
Oil pressure, water temperature and volt meter gauge	•	•
Outside temperature display	•	•
Dash illumination control	•	•
Leave key warning	•	•
Lights on warning	•	•

Safety/Security

Auto anti-dazzle rear view mirror	•	
Intelligent Rear View Mirror		•
Nissan Anti Theft System (NATS) vehicle immobiliser	•	
Nissan Anti Theft System (NATS) vehicle immobiliser and bonnet alarm		•
Front and rear parking sensors	•	•
Intelligent Around-View® Monitor (AVM) with Moving Object Detection	•	•
Vehicle Dynamic Control (VDC) including Traction Control System (TCS)	•	•
Anti-Lock Braking System (ABS) and Electronic Brakeforce Distribution (EBD)	•	•
Driver and passenger front and side impact SRS airbags	•	•
Curtain SRS airbags all 3 rows	•	•
Driver and passenger 3 point ELR seatbelts with pretensioners, load limiters and height adjustment	•	•
Second and third row 3 point ELR seatbelts	•	•
2nd row child restraint anchorage points (2 x ISOFIX outer seats, 2 x top tether)	•	•
3rd row child restraint anchorage point (right hand seat)	•	•
Driver and passenger seatbelt warning and reminder	•	•
Intelligent Cruise Control (ICC)	•	•
Intelligent Emergency Braking (IEB)	•	•
Intelligent Forward Collision Warning (IFCW)	•	•
Lane Departure Warning (LDW)	•	•
Intelligent Lane Intervention	•	•
Blind Spot Warning (BSW)	•	•
Intelligent Blind Spot Intervention	•	•
Rear Cross Traffic Alert (RCTA)	•	•
Tyre Pressure Monitoring System (TPMS)	•	•

MY20 PATROL SPECIFICATIONS

Specifications

	Ti	Ti-L
Exterior		
Sunroof (electric one-touch power tilt & slide) with Privacy glass		•
Roof rails		•
Power operated tailgate		•
Puddle illumination light		•
Automatic headlights	•	•
Automatic headlight leveliser	•	•
Headlight washers	•	•
Follow Me Home headlight function	•	•
LED headlights	•	•
LED Daytime Running Lamps	•	•
LED Front fog lights	•	•
LED rear combination light	•	•
Front variable intermittent rain sensing wipers	•	•
Rear intermittent wiper with demister timer	•	•
Side steps	•	•
Rear spoiler	•	•
Front and rear mud guards	•	•
Front and rear towing hooks	•	•
Chrome exterior door handles	•	•
One touch turn signal	•	•
Front door UV reducing glass	•	•
Rear side and back privacy glass	•	•
Front windscreen with laminated glass	•	•
Electromagnetic fuel lid opener	•	•
V8 Emblem	•	•
Ownership		
Capped Price Service ^M	•	•
5 year/unlimited kms Warranty ^{**}	•	•
5 year 24-Hour Roadside Assistance Program [*]	•	•

Not available Standard

CHOOSE YOUR COLOUR



Brilliant Silver (K23)*



Black Obsidian (KH3)*



Champagne Quartz (HAG)*



Gun Metallic (KAD)



Hermosa Blue (BW5)*



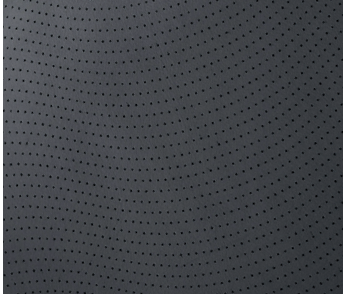
Moonstone White (QAC)*

In some cases, the printed colours may vary from the actual paint colours.

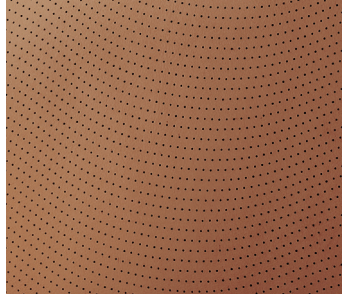
*Premium paint available at extra cost.

∞Premium paint available at extra cost. Available only upon request and built to order.
Ti-L model shown.

MY20 PATROL SPECIFICATIONS



Interior black leather accented seat trim[†].



Interior light tan leather accented seat trim[†] (forward order only)

^{*}Vehicle towing capacity is subject to towbar/towball capacity and design. Towing capacity may be reduced if a non genuine Nissan towbar is fitted. Please refer to the Genuine accessory brochure for towbar capacity information.

^{*}Kerb mass = unladen mass of vehicle with full fuel

^{*}Carrying capacity is the GVM minus the Kerb mass. The kerb mass does not include passengers, luggage, cargo, any accessories fitted or any towball download (as appropriate). Carrying capacity is distributed across both the front and rear axles, never exceed the GVM or the axle limits.

[†]Leather accented features and upholstery may contain synthetic material.

[#]GVM = Gross Vehicle Mass. GVM is the maximum laden mass of a motor vehicle.

^{*}Figures tested in accordance with ADR81/02 (combined test). Figures stated for the purposes of comparison amongst vehicles only. It is unlikely that this fuel consumption figure will be achieved in real world driving conditions. Actual fuel consumption depends on factors such as traffic conditions, vehicle condition, how you drive and any accessories fitted.

^{*}iPod is a registered trade mark of Apple Inc.

^{**}Ask your Nissan Dealer to explain exactly what items are covered in each Scheduled Service. Applies for up to 6 years/120,000kms (whichever occurs first). Some exclusions apply. Ask your Nissan Dealer or visit nissan.com.au/service to find out more and for full terms and conditions.

^{**}New Vehicle Warranty operates in addition to your rights under the Australian Consumer Law. See nissan.com.au/warranty for T&Cs.

^{*}Terms and conditions apply, please visit nissan.com.au/roadsideassistance



FINANCIAL
SERVICES

For more information please visit nissan.com.au/owners, ask your Nissan Dealer or phone 1800 035 035 during normal AEST business hours.

All illustrations, information and specifications presented and referred to in this brochure are for Series IV Navara models (April 2019 production onwards), and were correct at the time this brochure was approved for printing. The colours in the photographs may vary from actual colours. However, Nissan Motor Co (Australia) Pty. Ltd. reserves the right, subject to the laws of Australia and/or the regulations of any competent authority which may apply from time to time, at its discretion at anytime and without prior notice to discontinue or change the models, features, specifications, designs and prices of the products referred to in this brochure and any optional equipment therefore without incurring any liability whatsoever to any purchaser or prospective purchaser of any such products. Some of the items referred to herein are optional at extra cost. Some options may be required in combination with other options. Always consult your Nissan Dealer for the latest information on models, specifications, features, prices, options and availability. Nissan Motor Co (Australia) Pty. Ltd. ACN 004 663 156. Updated March 2021. PAT0667

Follow us: @Nissan_Aus

Like us: Nissan Australia

Check out: NissanAustralia Channel

