



MG HS

Overseas Model Shown



MG HS



THE MORE YOU'VE BEEN LOOKING FOR

Quality means making the right decisions at every stage with an unfaltering commitment to the highest standards in every detail. It appears effortless, but it's never easy. It takes hard work, skill and care to create timeless style and intelligent design.

When something is more considered, more crafted and offers more value, quality is at its core. The more you've been looking for is here with the MG HS. You'll find it in every millimetre of MG HS.

STYLE YOU'VE NEVER SEEN BEFORE

With its distinctive British styling, diamond cut alloy wheels and chrome roof rails, the MG HS is not only beautifully proportioned, but an SUV designed with sporting heritage in mind.

Sequential front and rear LED indicators, distinctive grille and the oversized panoramic sky roof offer a level of refinement that redefines style in the SUV space.*

*Features available and shown depend upon model chosen.





A MASTER-CLASS IN SPATIAL COMPOSITION

The interior of the HS is intuitively designed to deliver a driving experience that is not only comfortable but light, spacious and enjoyable.

The seamless connectivity to your work, play and entertainment via the class leading 10.1 inch touch display, ensures you won't miss a beat all while surrounded by a level of luxury finishes to impress.

SUPERIOR SEATING

Carefully designed seats provide comfort and support in all the right places. With a one-piece back, the sports seats are heated and include electric six-way adjustment.*

SOFT TOUCH INTERIOR

From interior door trim to the leather seats, rich, soft touch materials provide a luxurious feeling. Limited red interior also available in the Essence Anfield Edition.

CUSTOMISABLE AMBIENT LIGHTING

Set a softer mood or create a sportier feel with a full spectrum of ambient lighting options (available on Excite and Essence models).

10.1" INFOTAINMENT TOUCHSCREEN

Includes Apple CarPlay™ and Android Auto™ functionality.

*Heated electric six-way adjustment sports seats only available on Essence. †Leather look steering wheel



Chrome side window trim

Cleverly integrated functional spaces including rear armrest

60/40 split folding rear seats with fold flat and multi-tier boot floor



10.1" infotainment touchscreen

Premium detailing and finishes

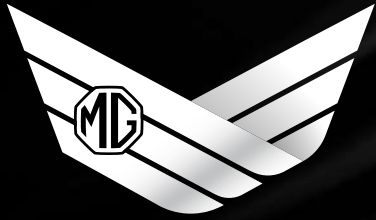
Leather look multi-function steering wheel*

Customisable ambient lighting

Superior soft touch interior

Electric six-way adjustment*

Angle adjustable rear seat - 2 stops



PILOT

DRIVER SAFETY TECHNOLOGY

THE NEW STANDARD IN SAFETY

At MG, innovation runs deep.

So, when it comes to safety, we've gone above and beyond in the all new HS by incorporating all the latest safety technology into a single platform we call MG PILOT.

With its 10 Active Driver Safety features as standard, MG PILOT is constantly sensing your surroundings, on the lookout for unseen hazards. With the ability to react autonomously in situations where driver safety is at risk, take comfort that you and your family are backed by a new level in safety intelligence.

With 6 SRS airbags and a 5 Star ANCAP rating on every grade, the all new MG HS is the new standard in safety.





INTELLIGENT SPEED LIMIT ASSIST

Actively detects speed limit signs and alerts you to your current vehicle speed.

TRAFFIC JAM ASSIST

Detects heavy traffic and automatically follows the vehicle in front, controlling acceleration, braking and steering within the lane.

BLIND SPOT DETECTION

Registers objects in hard-to-see areas to help you change lanes safely.

REAR CROSS TRAFFIC ALERT

Alerts you of approaching vehicles and pedestrians when reversing out of parking spaces.

360 DEGREE CAMERA

Provides you with a 360° field of view around the vehicle when reversing.
*Available on Essence only.

ADAPTIVE CRUISE CONTROL

Detects the front vehicle position and keeps a safe distance between your HS and the car in front.

ACTIVE EMERGENCY BRAKING

Senses impending collisions and applies the brakes to help avoid or lessen impact.

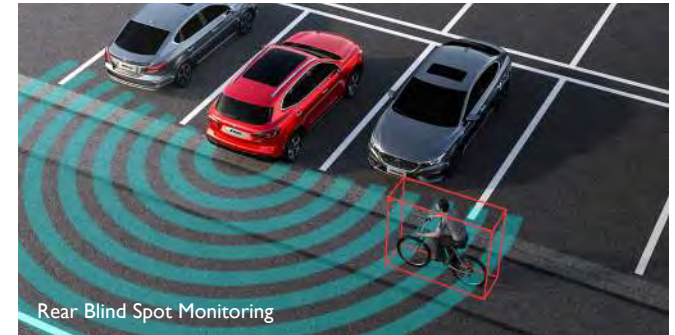
LANE ASSIST SYSTEM

Alerts the driver when the HS is getting too close to the lane edge.

DOOR OPENING WARNING

Warns you of danger when opening vehicle doors.

The above safety features are driver assist technologies that are not a substitute for safe and attentive driving or for the drivers control over the vehicle.



Rear Blind Spot Monitoring



Rear Cross Traffic Warning



Line Change Warning



Door Open Warning

MG HS AWD

ADVENTURE EVERYDAY

For those who need the power and performance of an all-wheel drive with sleek styling and modern refinements, the MG HSAWD has you covered.

Powered by a 2.0L Turbocharged petrol engine, the MG HSAWD reaches 0-100km in 8.6 seconds. What's more, the AWD HS variant delivers a maximum power output of 168 Kw and 360 Nm. maximum torque.

The powerful 2.0L Turbo engine is ideal for reactive driving in urban environments as well as navigating those longer rural road trips. In addition, the premium Michelin tyres are also adaptive to both city and country terrain, ensuring uncompromised performance on and off the beaten track.



Ample boot space with 40 / 60 rear split seats

Overseas Model Shown



Overseas Model Shown



MG HS
AWD



MG HS+EV

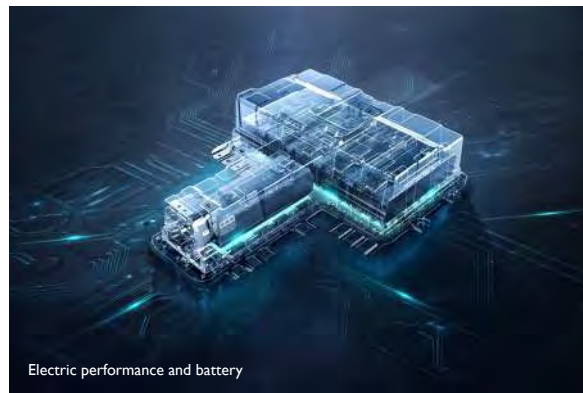




Charging made simple



Spacious and comfortable interior



Electric performance and battery



12.3" virtual instrument cluster



Panoramic Stargazer Sunroof

ENJOY THE BEST OF BOTH WORLDS

Introducing the MG HS Plus EV. MG Motor's spacious, family-friendly SUV now offers the best of both worlds, designed for those who want the advantages of electric driving with the practicality of a combustion engine.

Powered by a combination of a 1.5-litre turbocharged petrol engine, a permanent-magnet synchronous motor and a liquid-cooled lithium-ion battery, the HS Plus EV also the most powerful MG ever, producing 189kW and 370Nm.

Whether it's tackling the midweek commute, running errands around town or navigating the school run, enjoy silent, powerful and emissions-free performance with a pure electric driving range of up to 63km from a single charge*.

Charging can be done easily overnight, via a home 7kW fixed wall charger, taking approximately 5 hours[^] to fully charge via a Type 2 charging port conveniently located on the side of the car.

MORE POWER WITH LESS CONSUMPTION

Exceptional fuel economy, vastly reduced CO2 emissions and impressive acceleration is all part of the HS Plus EV experience.

MG's most powerful SUV delivers rapid acceleration, reaching 0-100km/h in just 6.9 seconds.

Proving that power and economy aren't mutually exclusive, the MG HS Plus EV returns an impressive 1.7L/100km fuel consumption figure (combined)[~] and combined CO2 emissions of just 39 grams per kilometre.[~]

Engage EV mode with the press of a button at any speed, and you'll not only save money at the bowser, but your emissions fall to zero.

*Range figures are determined by testing under standardised laboratory conditions to comply with ADR 81 / 02. These figures should only be used for the purpose of comparison amongst vehicles. Actual figures will generally differ under real world driving conditions and will vary depending on factors including (but not limited to) driving style, vehicle's equipment and road, traffic and weather conditions. Provisional data at time of going to print. [^] Charging times can vary depending on many factors including but not limited to environmental conditions, auxiliary consumables (e.g. seat heating and air-conditioning) and capabilities of charging infrastructure capacity and/or supply. [~]Figures according to ADR 81/02 derived from laboratory testing. Factors including but not limited to driving style, road and traffic conditions, environmental influences, vehicle condition and accessories fitted, will in practice in the real world lead to figures which generally differ from those advertised. Advertised figures are meant for comparison amongst vehicles only. Actual Australian specification may vary from vehicle shown.



MG HS VIBE



1.5L TURBO

The Vibe adds additional luxury to the Core with leather look seats, chrome front foglamps and elegant roof rails, bringing refinement to your driving experience.

MG HS VIBE:

- Front fog lamps
- Electric door mirrors with Heating
- Shark fin antenna
- Leather look seats
- Keyless entry system
- Silver roof rails
- Leather steering wheel
- Front console with cooling function





MG HS EXCITE + EXCITE X



1.5L TURBO 2.0L TURBO AWD

At the push of the button the MG Excite transforms your SUV to sports car to really get your blood pumping. With paddle shift controls, super sports mode and performance upgrades included, with MG HS Excite, exhilaration comes standard.

MG HS EXCITE:

- Available in 2.0L Turbo AWD
- 18" alloy wheels
- Customisable ambient lighting
- Electric tailgate
- Satellite navigation
- Dualzone automatic climate control
- Rain sensor wipers
- LED headlight with manual levelling
- LED taillamp - sequential illumination
- LED ambient lighting
- Sports metal trim pedals
- Paddle shift on steering wheel
- Super sport mode





MG HS ESSENCE + ESSENCE X



1.5L TURBO 2.0L TURBO AWD

When it comes to sophistication and style the MG HS Essence is the crème de la crème of the MG SUV range. With top of the range inclusions and finishes throughout, the MG Essence is everything you desire in a future classic.

MG HS ESSENCE:

- Available in 2.0L Turbo AWD
- Electronic panoramic sunroof
- 360 Camera
- Leather sports seats
- Rear row reading light
- Front heated seats
- Passenger's 4way electronically adjustable seats
- Driver's 6way electronically adjustable seat



AVAILABLE COLOURS

Brighten your drive with our range of expressive MG HS colours. Choose from our considered selection of bespoke shades in both metallic and non-metallic options



**NEW PEARL WHITE
METALLIC**



**YORK WHITE
NON METALLIC**



**BRIXTON BLUE
METALLIC**



**DIAMOND RED
METALLIC**



**BLACK PEARL^o
METALLIC**



**STERLING SILVER
METALLIC**





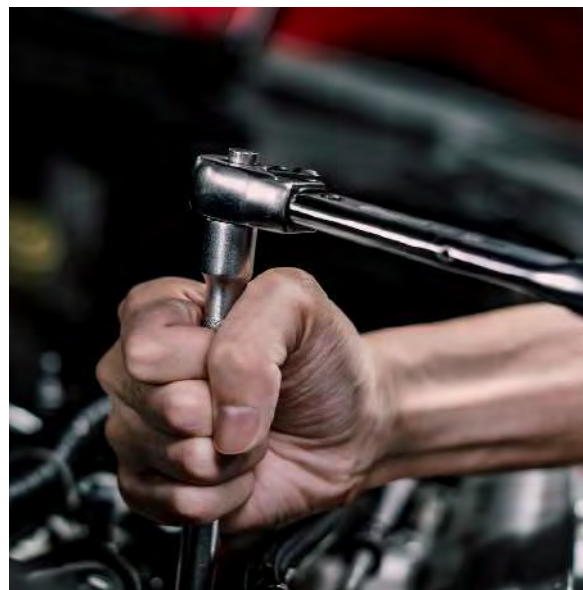
PEACE OF MIND

Your new MG comes complete with a comprehensive manufacturer-backed warranty for true peace of mind. MG's industry-leading engineering and rigorous research and development programs also ensure a positive ownership experience, and our warranty coverage is backed by a nationwide dealer network.

P R E C I S E
PRICE SERVICING

COMPLETE CONFIDENCE

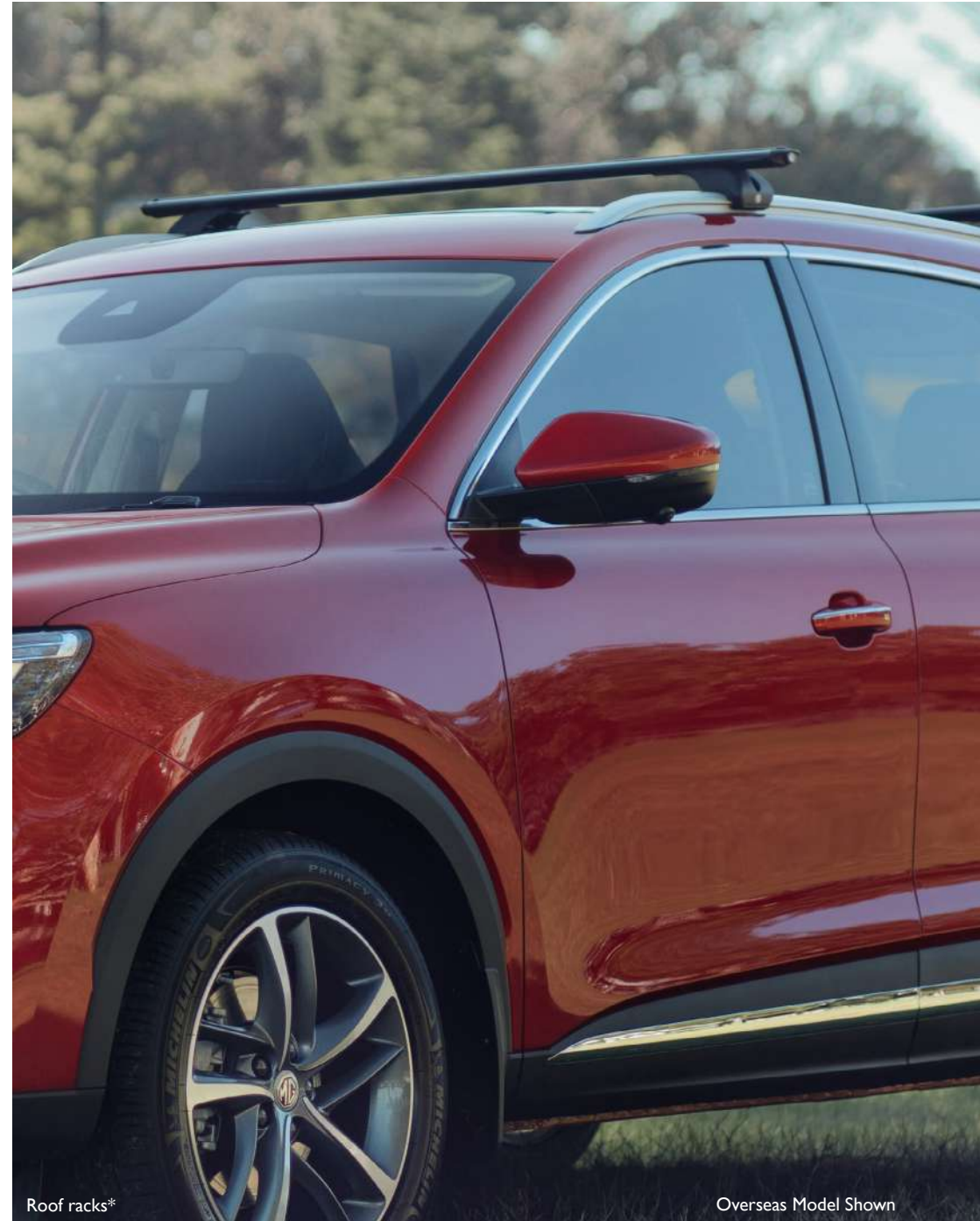
Your MG HS deserves the best of care. With MG Precise Price Servicing, all items requiring maintenance as indicated in the MG service schedule, are included in the quoted cost. This means we assure you that the price listed is the price you will pay.



FINISHING TOUCHES

It's all the unexpected little things we include that makes the MG HS such great value. However, if you want to take it a step further, our extensive range of accessories can make your MG HS one of a kind, adapt to your practical needs, and add even more value to your everyday driving experience.

- Fabric mats
- Material load liner
- Rubber boot mat
- Mud guards
- Spare wheel kit
- Dog guard
- Paint touch-up kit
- Towbar (with electrics)
- Roof bars (max. 75kg weight limit)
- Gloss black mirror caps
- MG branded dust caps
- Cargo Barrier



Overseas Model Shown



Boot lip protector



Rubber floor mats



Carpet floor mats



Plastic boot liner



Carpet boot liner

TECHNICAL SPECIFICATIONS

	VIBE	EXCITE	ESSENCE	EXCITE X AWD	ESSENCE X AWD	PLUS EV EXCITE	PLUS EV ESSENCE
ENGINE							
Type		1.5-litre Turbo inline		2.0-litre Turbo inline petrol		1.5-litre petrol turbocharged I4	
Cylinders				4			
Cubic capacity (cc)		1490		1995			
No. of valves				16			
Max power (Kw @ rpm)		119 @ 5600		168 @ 5300		119 @ 5500	
Max torque (Nm @ rpm)		250 @ 4400		360 @ 4000		250 @4300	
Induction		Turbo charged electronic multipoint direct injection					
Emission standard				Euro 5			
TRANSMISSION							
Transmission		7-Speed twin clutch transmission		6-Speed twin clutch transmission		10-Speed Transmission	
FUEL TANK							
Capacity (L)				55			
ELECTRIC MOTOR AND BATTERY							
Battery Capacity, kWh						16.6kWh	
Motor max power (Kw)						90 kW	
Motor max torque (Nm)						230 Nm	
Charger Connection Type						Type2 AC	
Estimated 7kW Charge Time (full charge) / hours						5h	
Range, EV only (NEDC)						63km	
WHEELS AND TYRES							
Wheel size	17" alloy	18" alloy		18" alloy		17" alloy	18" alloy
Spare wheel (space saver)	•	•	•	•	•	Tyre Repair Kit	
BRAKES							
Ventilated front discs	•	•	•	•	•		•
Rear discs	•	•	•	•	•		•
Brake disk diameter (front)				312mm x 25mm			
Brake disk diameter (rear)				304mm x 12mm			
SUSPENSION							
Front				McPherson front suspension			
Rear				Multi-link rear suspension			
WEIGHTS							
Kerb weight (kg)	1489	1550		1700		1775	
Gross vehicle weight (kg)	1928	1989		2139		2196	
Maximum unbraked trailer towing weight (kg)				750			
Maximum braked trailer towing weight (kg)~		750		1500			
DIMENSIONS							
Length (mm)				4574			
Width including mirrors (mm)				1876			
Height (mm)	1664		1685			1685	
Wheelbase (mm)				2720			
Minimum ground clearance (mm)				145			
Boot volume with seats in place to security cover height			463			451	
Boot volume with seats folded to window line (L)			1287			1275	
CONSUMPTION & EMISSIONS							
City cycle (L/100km)		9.2		13.1		5.8	
Highway cycle (L/100km)		6.2		7.5			
Combined cycle (L/100km)		7.3		9.5		1.7	
CO2 emissions (g/km)		170		221		39	
BODY STYLE							
5 DOOR SUV	•	•	•	•	•	•	•

~Capacity is based on the authorised fitment of a genuine MG Motor towbar kit. Do not exceed maximum towbar capacity. Do not exceed gross vehicle mass (GVM) or gross combined mass (GCM) when towing. Obey all State and Territory regulations when towing.

	VIBE	EXCITE	ESSENCE	EXCITE X AWD	ESSENCE X AWD	PLUS EV EXCITE	PLUS EV ESSENCE
SECURITY							
Rolling code transponder immobiliser	•	•	•	•	•	•	•
Visible VIN	•	•	•	•	•	•	•
Internally operated central locking	•	•	•	•	•	•	•
Delayed automatic locking	•	•	•	•	•	•	•
Automatic locking doors and boot (activated by vehicle moving)	•	•	•	•	•	•	•
Door ajar warning	•	•	•	•	•	•	•
Anti-theft alarm	•	•	•	•	•	•	•
SAFETY							
6 airbags	•	•	•	•	•	•	•
ABS with electronic brake force distribution	•	•	•	•	•	•	•
Emergency brake assist (EBA)	•	•	•	•	•	•	•
Electronic stability program (ESP)	•	•	•	•	•	•	•
Active cornering brake control (CBC)	•	•	•	•	•	•	•
Side impact absorbent door padding (front doors)	•	•	•	•	•	•	•
Pretension and load limiting front seat belts	•	•	•	•	•	•	•
Seatbelt warning indicator lights – front & rear	•	•	•	•	•	•	•
Three rear 3-point seatbelts	•	•	•	•	•	•	•
Hill launch assist	•	•	•	•	•	•	•
Rear seat child restraint anchorage points	•	•	•	•	•	•	•
Automatic door unlocking in accident	•	•	•	•	•	•	•
Automatic activation of hazard lights under emergency braking	•	•	•	•	•	•	•
Ultra-high tensile steel cage body	•	•	•	•	•	•	•
Intrusion minimizing and collapsible steering column	•	•	•	•	•	•	•
MG PILOT							
Adaptive cruise control	•	•	•	•	•	•	•
Forward collision warning	•	•	•	•	•	•	•
Automatic emergency braking	•	•	•	•	•	•	•
Lane assist system	•	•	•	•	•	•	•
Traffic jam assist	•	•	•	•	•	•	•
Blind spot detection	•	•	•	•	•	•	•
Rear cross traffic alert	•	•	•	•	•	•	•
Intelligent headlamp control	•	•	•	•	•	•	•
Intelligent speed assistance system	•	•	•	•	•	•	•
MULTIMEDIA							
4 speaker audio system with Bluetooth, USB							
6 speaker audio system with Bluetooth, USB	•	•	•	•	•	•	•
Sound effect (base)	•	•	•	•	•	•	•
Speed related volume controls	•	•	•	•	•	•	•
10.1" Multi-function colour touch screen with Apple CarPlay & Android Auto	•	•	•	•	•	•	•
12V charger in the front	•	•	•	•	•	•	•
Front 1 USB ports							
Front 2 USB ports	•	•	•	•	•	•	•
Rear 2 USB ports	•	•	•	•	•	•	•
Steering wheel audio controls	•	•	•	•	•	•	•
Satellite navigation (colour)		•	•	•	•	•	•
HEATING & VENTILATION							
Electric control air conditioning	•						
Dual zone automatic climate control		•	•	•	•	•	•
Rear air conditioning vents	•	•	•	•	•	•	•
Front centre armrest with cooling function	•	•	•	•	•	•	•
Pollen filter	•	•	•	•	•	•	•

	VIBE	EXCITE	ESSENCE	EXCITE X AWD	ESSENCE X AWD	PLUS EV EXCITE	PLUS EV ESSENCE
INTERIOR FEATURES							
Front door stowage bins with bottle holders	•	•	•	•	•	•	•
Twin front cup holders	•	•	•	•	•	•	•
Trophy badge		•	•	•	•		
Front seat back map pockets	•	•	•	•	•	•	•
Courtesy light with delay	•	•	•	•	•	•	•
Boot light	•	•	•	•	•	•	•
Removable luggage cover above boot	•	•	•	•	•	•	•
Front map reading lights	•	•	•	•	•	•	•
LED ambient light			•		•		•
Welcome lights			•		•		•
Driver and passenger sun visors with vanity mirrors and illumination	•	•	•	•	•	•	•
Glovebox with illumination	•	•	•	•	•	•	•
PU steering wheel							
Leather trimmed, multifunctional steering wheel with contrast stitching & perforation detail	•	•	•	•	•	•	•
Sporty drive mode button		•	•	•	•		
Paddle Shift		•	•	•	•		
Premium trimmed gear knob	•	•	•	•	•	•	•
Sporty metal trim pedals		•	•	•	•	•	•
Synthetic leather interior trim for door facings with contrast stitching detail	•	•	•	•	•	•	•
12V accessory power point in centre console	•	•	•	•	•	•	•
Satin chrome highlights to door handles, air vents and steering wheel	•	•	•	•	•	•	•
SEATING							
Driver 6way manually adjustable seat	•	•		•			
Passenger 4way manually adjustable seat	•	•		•			
Driver's 6way electrically adjustable seat			•		•	•	•
Passenger's 4way electrically adjustable seat			•		•		•
Front seat heating - driver and passenger			•		•	•	•
Driver's seat manual lumbar adjustment	•	•	•	•	•	•	•
Front centre armrest with storage, slideable	•	•	•	•	•	•	•
60/40 split folding rear seats with fold flat and multi-tier boot floor	•	•	•	•	•	•	•
Angle adjustable rear seat - 2 stops	•	•	•	•	•	•	•
Rear arm rest with cup holder	•	•	•	•	•	•	•
Chrome side window trim	•	•	•	•	•		
Fabric seats							
Synthetic leather seats	•	•		•		•	•
PU & PVC Seat						•	•
Two-tone front leather sports seats			•		•		•
INSTRUMENTS							
Part virtual instrument cluster	•	•	•	•	•		
12.3" virtual cockpit						•	•
Cluster backlight colour change		•	•	•	•	•	•
Cluster brightness adjustment	•	•	•	•	•	•	•
Rev counter	•	•	•	•	•		
Water temperature and fuel gauges	•	•	•	•	•	•	•
Distance to next service indicator	•	•	•	•	•	•	•
Trip computer	•	•	•	•	•	•	•
Multi-function digital display in dashboard	•	•	•	•	•	•	•
Direct tyre pressure monitoring system	•	•	•	•	•	•	•
'EPS' Electronic power steering mode adjust	•	•	•	•	•	•	•
Autodimming inner rear view mirror	•	•	•	•	•	•	•

	VIBE	EXCITE	ESSENCE	EXCITE X AWD	ESSENCE X AWD	PLUS EV EXCITE	PLUS EV ESSENCE
EXTERIOR FEATURES							
18" diamond cut alloy wheel		•	•	•	•	•	•
MG 'exclusive' grille with chrome surround and satin silver inlay highlight	•	•	•	•	•	•	•
Chrome finish fog light surround	•	•	•	•	•		•
Body colour door mirrors with integrated turn signal (LED)	•	•	•	•	•	•	•
Body colour door handles	•	•	•	•	•	•	•
Rear spoiler	•	•	•	•	•	•	•
Side sill extensions with chrome highlights	•	•	•	•	•	•	•
Shark fin antenna	•	•	•	•	•	•	•
Wheel arch moulding	•	•	•	•	•	•	•
Chrome side window trim	•	•	•	•	•	•	•
Roof rails	•	•	•	•	•	•	•
Panoramic glass sunroof with sunshade and anti-trap			•		•		•
AWD badge				•	•	+EV Badge	+EV Badge
EXTERIOR LIGHTING & VISIBILITY							
Projector halogen headlamps with manual height adjustment function	•						
LED headlight with manual height adjustment function		•	•	•	•		•
Front fog lights	•	•	•	•	•		•
Rear fog light	•	•	•	•	•	•	•
LED 'London Eye' daytime running lights	•	•	•	•	•	•	•
LED taillamp	•						
LED taillamp with sequential illumination		•	•	•	•		•
Lights on warning alarm	•	•	•	•	•	•	•
Heated glass rear window with timed cut-off	•	•	•	•	•	•	•
Intermittent rear wiper	•	•	•	•	•	•	•
Intermittent windscreen wipers	•	•	•	•	•	•	•
Rain sensor wiper		•	•	•	•	•	•
Automatic headlight illumination system	•	•	•	•	•	•	•
Follow me home delayed headlight illumination	•	•	•	•	•	•	•
COMFORT & CONVENIENCE							
Speed sensitive power steering	•	•	•	•	•	•	•
ECO cruising driving remind	•					•	•
MG sport management strategy (Super Sport Model)		•	•	•	•		
Remote control central locking	•	•	•	•	•	•	•
Rear parking sensors	•	•	•	•	•	•	•
Rear view camera	•	•		•			
360 degree surround view camera			•		•		•
Electric windows with driver one touch	•	•	•	•	•	•	•
Height adjustable steering wheel	•	•	•	•	•	•	•
Push button start	•	•	•	•	•	•	•
Remote key system							
Keyless entry system	•	•	•	•	•	•	•
Remote unlock boot	•	•	•	•	•	•	•
Electric tailgate		•	•	•	•		•
Storage box in the trunk	•	•	•	•	•		
Luggage cover	•	•	•	•	•		
Electrically operated door mirrors						•	•
Electrically operated door mirrors with heating	•	•	•	•	•	•	•



Value Since 1924

  [mgmotor.com.au](https://www.mgmotor.com.au)

© MG Motor Australia 2022. MG Motor Australia offers this information as a general guide to product specifications. All data is believed to be correct as of June 2022; however, as product development is an ongoing process, changes may occur from time to time which may not be necessarily reflected herein. To the maximum extent permitted by law, MG Motor Australia shall not be liable for any reliance placed by any person on the content of this publication. MG Motor Australia reserves the right to change specifications without notice. Accordingly, this information should not be regarded as an infallible guide to correct specifications, nor does it constitute an offer for sale of any particular vehicle. Whilst all care has been taken to provide you with information in regards to the general use of MG products, you should not rely solely on the information provided in this specification sheet. Dealers are not agents of MG Motor Australia and have absolutely no authority to bind MG Motor Australia by an express or implied undertaking or representation. †Colours in this brochure may vary to those on the vehicle. ^Warranty T&C's at www.mgmotor.com.au/warranty. Bluetooth® is a registered trademark and logo of Bluetooth SIG, Inc.

MG HS