



# 3008 SUV

TIME TO CHANGE



\*Overseas model shown



\*Overseas model shown

## TIME TO CHANGE

Elevated by 210 years of French inventiveness and distinguished design, today's PEUGEOT 3008 SUV seamlessly blends a sensory experience that goes beyond driving, with dynamic power and strength.

Assertive exterior lines highlight the robust, athletic design with frameless grille and striking chrome highlights, luminous signature LED headlights and dramatic 3D claw-shaped taillights.

The result is a truly inspired PEUGEOT 3008, where every detail has been thoughtfully honed to deliver an intuitive driving experience and undeniable character.

The PEUGEOT 3008 is available in three levels of specification or choose the GT Sport PHEV AWD for stylish hybrid electric driving.



\*Overseas model shown

## DESIGN & TECHNOLOGY



### PEUGEOT i-Cockpit™

The driver's focus can stay on the road thanks to the customisable, 12.3" head-up digital instrument display.

Now more intuitive than ever, the larger, new 10" High Definition touch screen (pictured right) enables quicker more accurate access to key functions.

### SAFETY TECHNOLOGY

New generation, on-board safety features include - autonomous emergency braking with low light detection of pedestrians and cyclists, lane keep assist, lane departure warning, blind spot monitoring and adaptive cruise control for a smooth driving experience.

### FEATURE PACKED

The high-end interior exudes style and substance with new premium seating materials featuring leather effect, contrast stitching, improved ergonomics, compatible Apple CarPlay® or Android Auto™ connectivity<sup>1</sup> and built-in 3D satellite navigation.

1. Compatible Apple® or Android™ device required.



\*Overseas model shown



## PLUG-IN HYBRID TECHNOLOGY

Available in 3008 GT Sport PHEV AWD



### PLUG-IN HYBRID MOTOR

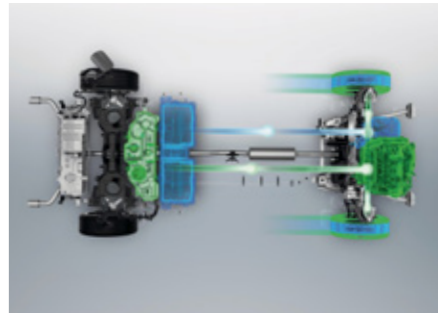
The plug-in hybrid motor provides a powerful, fluid and efficient driving experience in all conditions. Enjoy the versatility of all-electric mode producing zero emissions, a silent performance with reduced vibrations and sharp acceleration thanks to instant engine torque.

The 1.6-litre engine produces a combined 222kW for a rewarding & stimulating driving experience.



### e-EFFICIENT AUTOMATIC

The PEUGEOT 3008 GT Sport PHEV AWD is equipped with the new electrified Efficient Automatic 8 speed Transmission (e-EAT8) offering rapid and smooth gear shifts, with the option to manually change gear using the paddles mounted on the steering column.



### LITHIUM-ION BATTERY

The 300V high-voltage battery is the Lithium-ion type and is conveniently located under the rear seats to preserve cabin and cargo space.

The battery comes with an 8-year or 160,000 km warranty<sup>1</sup> for 70% of its 13.2kWh capacity.

\*Overseas model shown

1. Whichever occurs sooner, from vehicle's warranty start date.

## CHARGING YOUR PEUGEOT PLUG-IN HYBRID

Whether home charging or public charging, your PEUGEOT plug-in hybrid is designed to make life easy and to keep your mobile wherever you are.



### PRIVATE CHARGING

A Wallbox is PEUGEOT'S recommendation for optimum charging at home.

This method will efficiently charge your vehicle in just a few hours using the cable which comes with your vehicle.



### PUBLIC CHARGING

Utilising the expanding network of public infrastructure is an easy way to top-up range on the go, with many easy to use apps available for you on your smart phone.



### MYPEUGEOT APP

Use the MyPeugeot app to access your owner's handbook online, check servicing & maintenance schedules, as well as fuel tank levels and odometer readings.

It's also perfect for trip planning - sending that information to your car's built-in navigation - or checking where you parked.



## DRIVING RANGE

Enjoy travelling both short and long distances in your PEUGEOT plug-in hybrid, including a driving range of up to 60km WLTP<sup>1</sup> in 100% electric driving mode. Tips to help optimise the driving range of your PEUGEOT:

### THE POWER INDICATOR

Monitor energy consumption in real time, using the indicator on your dashboard, for efficient management of your vehicle's driving range.

### HYBRID OR 4WD MODE

The electric motors and petrol engine work together in hybrid mode while 4WD provides improved traction.

### REGENERATIVE BRAKING

When you release the accelerator the electric motor act as a generator, slowing the vehicle and recharging the battery.

1. The electric range achieved in real world conditions will depend upon a number of factors including, but not limited to: the accessories fitted (pre and post registration); the starting charge of the battery; variations in weather, driving styles and vehicle load. The WLTP (Worldwide Harmonised Light Vehicles Test Procedure) is used to measure fuel consumption, electric range and CO<sub>2</sub> figures.

\*Overseas model shown

# RANGE HIGHLIGHTS



## 3008 ALLURE SUV

### DRIVETRAIN

- 1.6L Petrol 121kW 6 speed auto

### TECHNOLOGY

- 12.3" digital heads up display
- 10" high definition touch screen
- Eco LED headlights
- Keyless entry & push button start
- Semi-auto park assist
- 3D satellite navigation
- Apple CarPlay® & Android Auto™<sup>1</sup>

### SAFETY<sup>2</sup>

- Autonomous Emergency Braking
- Active Lane Departure Warning
- Active Blind Spot Detection

- Adaptive Cruise Control
- Front & rear park sensors

### INTERIOR

- Cloth seat trim with leather effect and mint green top stitch
- Fabric dash and door panels
- Leather steering wheel
- Grey roof lining
- Auto dimming rear-view mirror
- Ambient lighting

### EXTERIOR

- 18" Detroit two tone finish diamond cut alloy wheels
- Nera black side mirrors
- Aluminium roof rails



## 3008 GT SUV

Additional to Allure Specifications

### DRIVETRAIN

- 1.6L Petrol 121kW 6 speed auto
- 2.0L Diesel 130kW 8 speed auto

### TECHNOLOGY

- Full LED headlights with static corner lighting
- Lane Positioning Assist (Diesel only)
- LED headlight dipping fog mode

### INTERIOR

- Alcantara® seats trim with leather effect and copper top stitch including:
  - Electric driver's seat
  - Driver massage function
  - Heated front seats

- Alcantara® dash and door panels
- Perforated leather steering wheel
- Premium black roof lining
- Frameless rear-view mirror
- Aluminium pedals

### EXTERIOR

- Diamond black contrasting roof

### OPTIONAL LUXURY PACK

- Panoramic opening glass roof
- Nappa leather appointed seats<sup>3</sup> with Lime Wood dash and door trim



## 3008 GT SPORT SUV

Additional to GT Specifications

### DRIVETRAIN

- 1.6L Petrol 133kW 8 speed auto

### TECHNOLOGY

- Acoustic laminated front side windows
- Lane Positioning Assist

### INTERIOR

- Nappa leather appointed seats<sup>3</sup>
- Electric driver's seat
- Heated front seats
- Driver massage function
- Lime Wood dash and door trim

### EXTERIOR

- Black Pack which includes:
  - 19" Washington onyx black diamond cut alloy wheels
  - Satin black front grille
  - Satin black exterior badging
  - Satin black exterior lettering
  - Tungsten grey skid plate
  - Gloss black roof arch trim
  - Satin black roof rails
  - Gloss black lower front bumper trim & front wing trim
- Panoramic opening glass roof



## 3008 GT SPORT PHEV AWD

Additional to GT Sport Specifications

### DRIVETRAIN

- Combined power output 222kW
- 1.6L Petrol Turbo 147kW
- Front axle electric motor 81kW
- Rear axle electric motor 83kW
- Electronic 8-speed Efficient Automatic Transmission (e-EAT)

### TECHNOLOGY

- Hybrid, Electric, Sport & 4WD driving modes
- 60km (WLTP<sup>4</sup>) electric-only driving range
- 13.2kWh Lithium-ion battery
- 3.7kW on-board charger

### BATTERY CHARGING & WARRANTY

- Charge to full in approximately 5 hours<sup>5</sup>
- Home charging cable
- 8 years or 160,000km battery warranty<sup>6</sup>

1. Compatible Apple® or Android™ device required. 2. Safety technologies are designed to assist the driver and are not a substitute for safe driving practices. 3. Leather appointed seats are a combination of genuine leather & synthetic materials for durability and are not wholly leather.

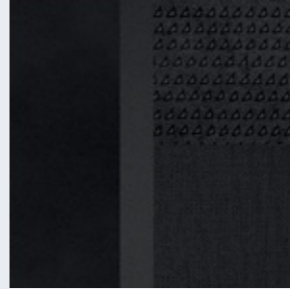
4. The electric range achieved in real world conditions will depend upon a number of factors including, but not limited to: the accessories fitted (pre and post registration); the starting charge of the battery; variations in weather, driving styles and vehicle load. The WLTP (Worldwide Harmonised Light Vehicles Test Procedure) is used to measure fuel consumption, electric range and CO<sub>2</sub> figures. 5. Charging times are dynamic depending upon a variety of variables, including the starting battery charge, charging equipment and ambient temperature. 6. Whichever occurs sooner, from vehicle's warranty start date.

## UPHOLSTERY & TRIM

UPHOLSTERY: 'Colyn' Fabric & Leather Effect  
DASH & DOOR TRIM: 'Brembo' Fabric  
(Standard on Allure)



UPHOLSTERY: Alcantara® & Leather effect  
DASH & DOOR TRIM: Grey Alcantara®  
(Standard on GT)



UPHOLSTERY: Full Grain Nappa Leather<sup>1</sup>  
DASH & DOOR TRIM: Lime Wood  
(Optional on GT<sup>2</sup>, standard on GT Sport)



## PAINT FINISHES



CELEBES BLUE



ULTIMATE RED<sup>2</sup>



NERA BLACK<sup>2</sup>



ARTENSE GREY<sup>2</sup>



PLATINUM GREY<sup>2</sup>



PEARL WHITE<sup>2</sup>



VERTIGO BLUE<sup>2</sup>

1. Leather appointed seats are a combination of genuine leather & synthetic materials for durability and are not wholly leather. 2. Available only in conjunction with sunroof option.

Note: Paint colours are representative only and subject to variation due to the printing process. 2. Optional extra

## TECHNICAL DATA



VARIANT	ALLURE/GT PETROL	GT DIESEL	GT SPORT	GT SPORT PHEV AWD
<b>DRIVETRAIN</b>	1.6 litre turbo petrol	2.0 litre turbo diesel stop & start system	1.6 litre turbo petrol stop & start system	1.6 litre turbo petrol & 2 electric motors
<b>TRANSMISSION</b>	6 speed automatic	8 speed automatic	8 speed automatic	8 speed automatic, 4 Wheel Drive <sup>1</sup>
<b>MAXIMUM POWER (kW @ RPM)</b>	121 @ 6000	130 @ 3750	133 @ 5500	222kW
<b>ACCELERATION 0-100km/h (sec)<sup>2</sup></b>	9.9	9.0	8.8	5.9
<b>FUEL CONSUMPTION (l/100km)<sup>3</sup></b>				
City	10.1 / 9.8	5.8	6.4	n/a
Highway	5.7 / 5.3	4.6	5.1	n/a
Combined	7.3 / 7.0	5.0	5.6	1.6
<b>CO<sup>2</sup> EMISSIONS (g/km)<sup>3</sup></b>	165 / 156	130	128	36.4

## WHEELS



18" Los Angeles Alloy wheels  
(Standard on Allure)



18" Detroit Two tone finish diamond cut alloy wheels  
(Standard on GT)

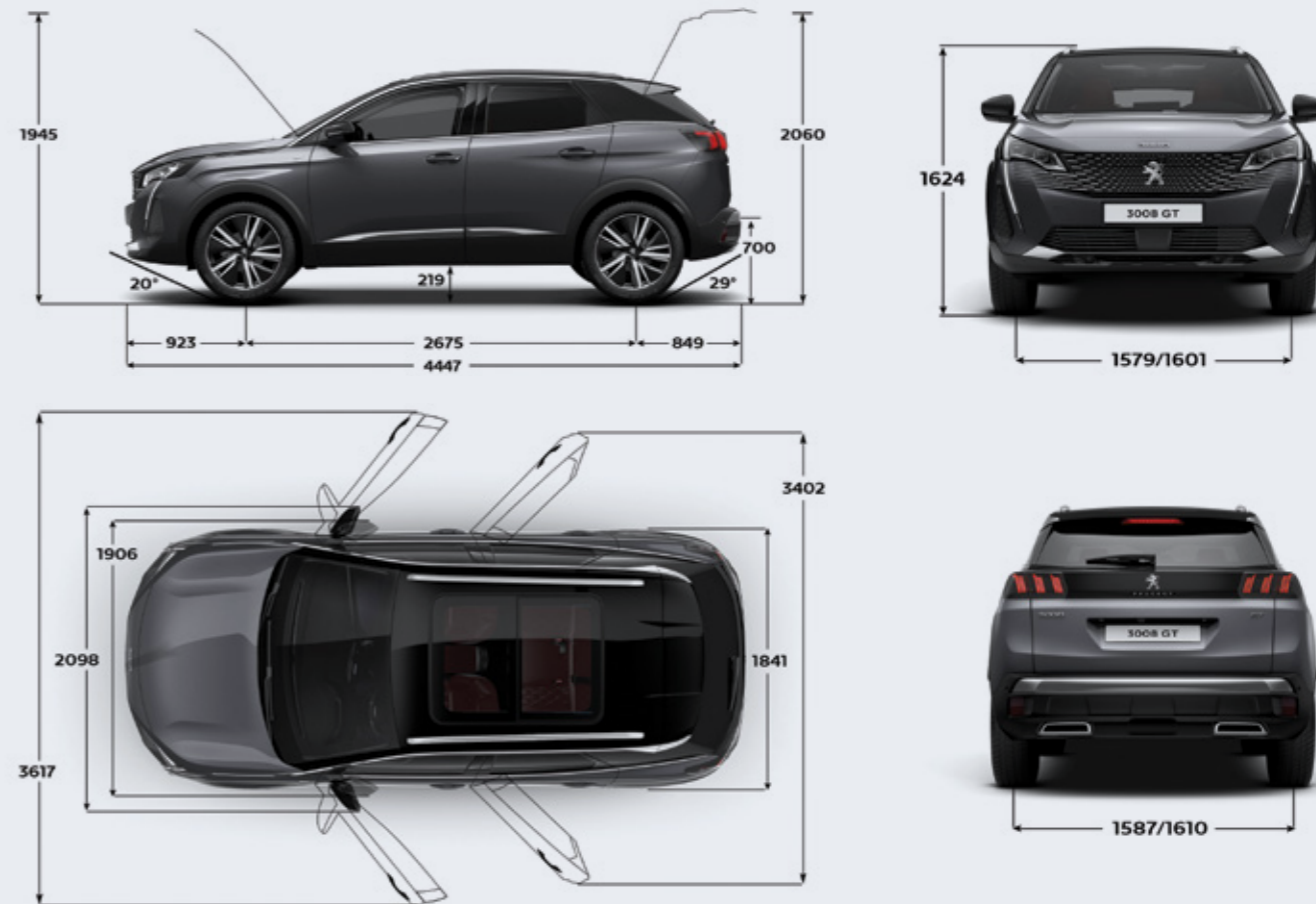


19" Washington Onyx black finish diamond cut alloy wheels  
(Standard on GT SPORT)



19" San Francisco black finish diamond cut alloy wheels  
(Standard on GT SPORT PHEV AWD)

## DIMENSIONS (mm)



1. 4WD available up to 135 kph. 2. Driver only. 3. Fuel consumption and carbon dioxide (CO<sub>2</sub>) emission figures quoted are measured in accordance with Australian Design Rule 81/02 and are for comparison purposes only. Real world results may vary based on individual driving circumstances e.g. traffic conditions, driving style, vehicle modifications, fuel quality, climatic conditions etc. Quoted figures may not reflect real world fuel consumption and carbon dioxide (CO<sub>2</sub>) emissions.

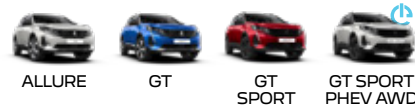


# 3008 SUV



# EQUIPMENT

- STANDARD
- OPTIONAL
- UNAVAILABLE



BODYSTYLE	ALLURE	GT	GT SPORT	GT SPORT PHEV AWD
5 door SUV	●	●	●	●

SAFETY	ALLURE	GT	GT SPORT	GT SPORT PHEV AWD
Advanced Grip Control® with Mud, Sand & Snow traction mode	●	–	–	–
Front Airbags: Driver & front passenger	●	●	●	●
Side Airbags: Driver & front passenger	●	●	●	●
Curtain airbags: First & second row	●	●	●	●
Safety Pack: Anti-lock Braking System (ABS)	●	●	●	●
Safety Pack: Electronic Braking Distribution (EBD)	●	●	●	●
Safety Pack: Blind Spot Detection (BSD)	●	●	●	●
Safety Pack: Emergency Braking Assistance (EBA)	●	●	●	●
Safety Pack: Electronic Stability Programme (ESP)	●	●	●	●
Safety Pack: Speed limit recognition & recommendation	●	●	●	●
Safety Pack: Advanced Driver Attention Alert (DAA3)	●	●	●	●
Safety Pack: Forward Collision Warning	●	●	●	●
Safety Pack: Lane Keeping Assistance (LKA)	●	●	●	●
Safety Pack: Lane Positioning Assist	–	● <sup>1</sup>	●	●
Safety Pack: Lane Departure Warning (LDW) system	●	●	●	●
Safety Pack: Road Edge Detection	●	●	●	●
Safety Pack: Autonomous Emergency Brake with low light cyclist & pedestrian detection	●	●	●	●
Safety Pack: High Beam Assist (HBA)	●	●	●	●
Electric child locking functionality on rear windows and doors	●	●	●	●

SAFETY	ALLURE	GT	GT SPORT	GT SPORT PHEV AWD
ISOFIX child seat fittings on outer rear seats	●	●	●	●
Seatbelt: Audible and visual alert when unfastened while moving	●	●	●	●
Seatbelt: Front & rear three-point retractable with pretensioner	●	●	●	●

COMFORT & CONVENIENCE	ALLURE	GT	GT SPORT	GT SPORT PHEV AWD
Drive mode selector: Eco, Normal, Sport	●	●	●	–
Drive mode selector: Hybrid, Electric, Sport, 4WD	–	–	–	●
PEUGEOT i-Cockpit™: configurable 12.3" head-up digital instrument panel	●	●	●	●
10.0" high definition capacitive touch-screen	●	●	●	●
PEUGEOT i-Cockpit™: compact sports steering wheel	●	●	●	●
Parking sensors: Front & rear	●	●	●	●
360° vision reversing & front cameras	●	●	●	●
Semi autonomous parking assist (90° and parallel)	●	●	●	●
Keyless entry & push button start	●	●	●	●
Speed limiter function	●	●	●	●
Adaptive cruise control	●	● <sup>2</sup>	–	–
Adaptive Cruise Control with Stop & Go function	–	● <sup>1</sup>	●	●
Steering mounted paddle gear shifter	●	●	●	●
Automatic dual zone climate control	●	●	●	●
Rear centre console ventilation system	●	●	●	●
Height & reach adjustable steering column	●	●	●	●
Frameless rear view mirror	–	●	●	●

# 3008 SUV



# EQUIPMENT

- STANDARD
- OPTIONAL
- UNAVAILABLE



## COMFORT & CONVENIENCE

	ALLURE	GT	GT SPORT	GT SPORT PHEV AWD
Multifunction trip computer	●	●	●	●
Privacy glass rear side and tailgate windows	●	●	●	●
One-touch electric windows with pinch protection	●	●	●	●
Door mirrors auto dipping in reverse function	●	●	●	●
Remote central locking (two remotes)	●	●	●	●
Two-position boot floor	●	●	●	–
Tyre pressure sensor	●	●	●	●

## IN CAR ENTERTAINMENT & COMMUNICATION

	ALLURE	GT	GT SPORT	GT SPORT PHEV AWD
Bluetooth® & USB	●	●	●	●
DAB Radio (Digital Audio Broadcasting)	●	●	●	●
Apple CarPlay® & Android Auto™ <sup>1</sup>	●	●	●	●
Voice recognition (radio and telephone features)	●	●	●	●
3D navigation	●	●	●	●

## INTERIOR FEATURES

	ALLURE	GT	GT SPORT	GT SPORT PHEV AWD
Blue ambient lighting to head-up instrument panel	●	●	●	●
Blue ambient lighting to front door panels, storage, footwells and Cup Holders	–	●	●	●
Dashboard and door panel finish: 'Bremer' fabric	●	–	–	–
Dashboard and door panel finish: Alcantara®	–	●	–	–
Dashboard and door panel finish: Lime wood	–	○ <sup>2</sup>	●	●
Stainless steel front door sill scuff plates	–	●	●	●

## INTERIOR FEATURES

	ALLURE	GT	GT SPORT	GT SPORT PHEV AWD
Front central console with two Cup Holders	●	●	●	●
Rear armrest with ski flap and two Cup Holders	●	●	●	●
Gear lever trim in full grain leather and chrome	●	●	●	●
Mistral full-grain leather steering wheel with stitch detail	●	–	–	–
Mistral full-grain perforated leather steering wheel with Aikinite stitch detail and satin chrome 'GT' emblem	–	●	●	●
Two front interior light with reading spotlights and rear interior light with timer	●	●	●	●
Vanity mirrors	●	●	●	●
Map pockets on front seat backs	●	●	●	●
Chrome trimmed accelerator and brake pedals	–	●	●	●
Roof lining - Light grey	●	–	–	–
Roof lining - Premium Mistral black	–	●	●	●
Satin steel chrome gear shifter and toggle switch trim	●	●	●	●
Three 12V sockets (dashboard, rear cabin and load area)	●	●	●	●

## EXTERIOR FEATURES

	ALLURE	GT	GT SPORT	GT SPORT PHEV AWD
Aluminium roof bars	●	●	●	●
Body colour rear spoiler with stainless steel edging trim	●	–	–	–
Nera black door mirror shells	●	●	●	●
Front bumper lower trim in Lion Grey	●	●	–	–
Front wing trim: Black with chrome detail	●	●	–	–
Gloss black strip rear cluster connecting strip	●	●	●	●
Radiator grille with chrome edge trim & facets	●	●	–	–

# 3008 SUV



# EQUIPMENT

- STANDARD
- OPTIONAL
- UNAVAILABLE



## EXTERIOR FEATURES

	ALLURE	GT	GT SPORT	GT SPORT PHEV AWD
'Diamond Black' contrasting roof	–	●	●	●
Sports front bumper design	–	●	●	●
Twin exhaust effect trim	–	●	●	●
Wheel arch extensions	●	●	●	●
18" Los Angeles alloy wheels	●	–	–	–
18" Detroit two tone finish diamond cut alloy wheels	–	●	–	–
19" Washington onyx black finish diamond cut alloy wheels	–	–	●	–
19" San Francisco black finish diamond cut alloy wheels	–	–	–	●
Black Pack - Front grille, front and rear badging, front and rear 'PEUGEOT' lettering, rear bumper strip, lower bumper trim, side door trim, front wing trims, window surrounds in black / dark chrome / satin black	–	–	●	●
Panoramic opening glass roof (with satin black electric interior blind and blue ambient lighting in blind)	–	○ <sup>1</sup>	●	●

## EXTERIOR LIGHTING & VISIBILITY

	ALLURE	GT	GT SPORT	GT SPORT PHEV AWD
LED headlights	●	–	–	–
Full LED adaptive headlights with static corner lighting	–	●	●	●
LED daytime running lights with integrated fog light function	●	●	●	●
Door mirror mounted LED puddle lights	●	●	●	●
Door mirror mounted LED 'PEUGEOT logo' projection puddle lights	–	○ <sup>2</sup>	●	●
Rear full LED 3D PEUGEOT signature 'Claw Effect' lights	●	●	●	●
Front windscreen wiper with 'Magic Wash' cleaning system	●	●	●	●

## EXTERIOR LIGHTING & VISIBILITY

	ALLURE	GT	GT SPORT	GT SPORT PHEV AWD
Automatic windscreen wipers & dusk sensing lights	●	●	●	●
'Guide me home' headlights	●	●	●	●

## SEATING

	ALLURE	GT	GT SPORT	GT SPORT PHEV AWD
Driver & front passenger seat height adjustment	●	●	●	●
Driver seat lumbar adjustment	●	●	●	●
Driver & front passenger seat adjustable cushion nose	–	●	●	●
Driver & front passenger heated seats	–	●	●	●
Driver seat multi-point massage function	–	●	●	●
Driver seat 2 position memory function	–	●	●	●
Driver seat 8-way electric adjustment (includes electric lumbar adjustment)	–	●	●	●
Front passenger seat manual adjustment (longitudinal & back rest angle)	●	●	●	●
Split folding 'Magic Flat' rear seat with boot accessible controls	●	●	●	●
Flat folding front passenger seat	●	●	●	●

## SEAT MATERIAL

	ALLURE	GT	GT SPORT	GT SPORT PHEV AWD
Leather effect/Colyn fabric trim with mint green top stitch	●	–	–	–
Leather effect/Alcantara® trim with copper top stitch	–	●	–	–
Full grain Nappa leather appointed trim with grey top stitch <sup>3</sup>	–	○ <sup>2</sup>	●	●

1. Only available in conjunction with Nappa Leather option. 2. Only available in conjunction with Panoramic opening sunroof option. 3. Leather appointed seats are a combination of genuine leather and synthetic materials and are not wholly leather.

# 3008 SUV



# TECHNICAL SPECIFICATIONS



## INTERNAL COMBUSTION ENGINE

Drivetrain	1.6 litre turbo petrol	2.0 litre turbo diesel with stop & start system	1.6 litre turbo petrol with stop & start system	1.6 litre turbo petrol hybrid
Cylinders	4	4	4	4
Cubic capacity (cc)	1598	1997	1598	1598
Bore x Stroke (mm)	77 x 85.8	85 x 88	77 x 85.8	77 x 85.8
No. of valves	16	16	16	16
Max power (kW @ rpm)	121 @ 6000	130 @ 3750	133 @ 5500	147 @ 6000 <sup>1</sup>
Max torque (Nm @ rpm)	240 @ 1400	400 @ 2000	250 @ 1650	300 @ 3000
Emission standard	Euro 6	Euro 6	Euro 6.3	Euro 6.3

## ELECTRIC MOTOR (GT SPORT PHEV AWD only)

Electric motor (integrated with the e-EAT8 gearbox)	1 at the front / 1 at the rear
Max power (kW @ rpm)	81@2500 (front), 83@14000 (rear)
Max torque (Nm @ rpm)	320@500 - 2500 (front), 166@0 - 4760 (rear)
Battery	Li-ion
Battery warranty	8 year traction
Battery Capacity (kWh)/Battery Power (kW)	13.2 / 90
On Board Charger (kW)	3.7

## COMBINED PERFORMANCE (Petrol engine & electric motor - GT SPORT PHEV AWD only)

Max power (kW)	222
Max torque (Nm)	520

## TRANSMISSION

Type	Automatic, Front wheel drive			Automatic, 4 Wheel Drive <sup>2</sup>
Number of gears	6	8	8	8

## PERFORMANCE

Maximum speed (km/h)	201	207	222	235
Acceleration 0-100km/h (sec) <sup>3</sup>	9.9	9.0	8.8	5.9

## STEERING

Power steering	Electric	Electric	Electric	Electric
----------------	----------	----------	----------	----------

## SUSPENSION

Front	Independent wheels - Pseudo-MacPherson axle, coil springs and integrated and pressurised hydraulic shock absorbers
Rear	Semi-independent wheels - Twist beam axle, hydraulic and pressurised shock absorbers

## BRAKES

Front discs	Ventilated disc brakes with sliding caliper and automatic wear adjustments
Rear discs	Sliding calliper disc brakes

## WHEELS & TYRES

Wheel Size / Tyre	18" - 225/55 R18	18" - 225/55 R18	19" - 205/55 R19	19" - 255/55 R19
Spare type	18" - 135/80 R18	18" - 135/80 R18	18" - 135/80 R18	Tyre repair kit

# 3008 SUV



# TECHNICAL SPECIFICATIONS

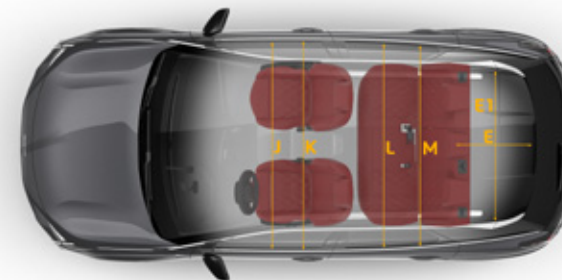
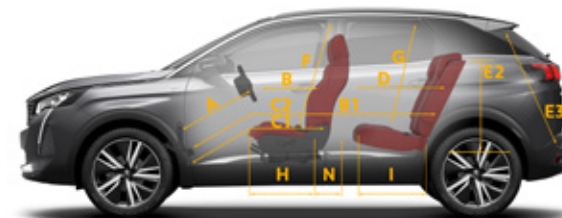
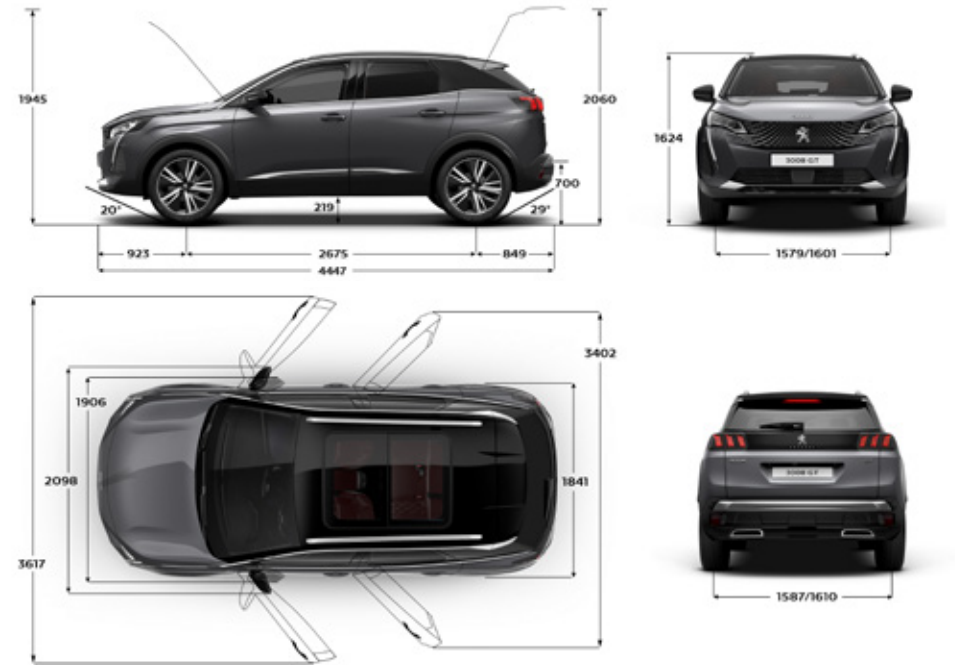


WEIGHTS (kg)				
Gross vehicle weight	1950/1960	2090	1970	2330
Kerb weight	1400/1422	1540	1429	1840
Tare weight	1371/1390	1504	1397	1815
Max. braked towing load	1550	1750	1500	1250
Max. unbraked towing load	600	750	750	750

DIMENSIONS (mm)				
Length	4447	4447	4447	4447
Width mirrors open/folded	2098 / 1906	2098 / 1906	2098 / 1906	2098 / 1906
Height	1624	1624	1624	1623
Wheelbase	2675	2675	2675	2675
Front/rear overhang	925/849	923/849	925/849	925/849
Front/rear track width	1579/1587	1579/1587	1579/1587	1579/1587
Front/rear overhang (degrees)	20/29	20/29	20/29	20/29

DIMENSIONS (m)				
Turning circle	10.7	10.7	10.7	10.7

FUEL & EMISSIONS*				
City cycle (l / 100km)	10.1 / 9.8	5.8	6.4	n/a
Highway cycle (l / 100km)	5.7 / 5.3	4.6	5.1	n/a
Combined cycle (l / 100km)	7.3 / 7.0	5.0	5.6	1.6
CO <sup>2</sup> emissions (g / km)	165 / 156	130	128	36.4
Fuel tank capacity (l)	53	53	53	43



A	746
B	587
C1	816
C2	1706
D	889
E	919
E1	1053
E2	609
E3	821
F	915
G	912
H	612
I	554
J	1451
K	1493
L	1422
M	1484
N	240

# BOOT VOLUMES



## 3008 SUV

591 Litres<sup>1</sup>  
with all seats in place



1670 Litres<sup>2</sup>  
with 2nd rear seats  
folded down



1.529 Litres for PHEV variant. 2. 1608 Litres for PHEV variant.

Peugeot Citroën Australia offers this information as a general guide to product specifications. All data is believed to be correct as at July 2022, however, as development is an ongoing process, changes may occur from time to time which will not necessarily be reflected herein. Therefore, Peugeot Citroën Australia reserves the right to change specifications without notice. Accordingly, this information should not be regarded as an infallible guide to correct specifications, nor does it constitute an offer for sale of any particular vehicle. Whilst all care has been taken to provide you with information in regards to the general use of PEUGEOT products, you should not rely solely on the information provided in this brochure. Dealers are not agents of Peugeot Citroën Australia and have absolutely no authority to bind Peugeot Citroën Australia by an express or implied undertaking or representation. Peugeot Citroën Australia is the trading name of Inchcape European Automotive Pty Limited (ABN 97 070 000 789).

PCA7050 / MY22 / 07.22

\*Fuel consumption results are based on NEDC's standard test procedure to provide customers with a basis for comparison of the performance of vehicles in accordance with ADR 81/02 only. No test can simulate all 'real world' driving conditions. Actual on-road fuel consumption is will vary due to factors such as traffic conditions, vehicle conditions and load, fuel quality and how the vehicle is driven. More information at [www.greenvehicleguide.gov.au](http://www.greenvehicleguide.gov.au).



CONFIGURE



CURRENT OFFERS \$

ACCESSORIES



FIND A DEALER



\*Overseas model shown